

# Release Notes for InstantPlanner 7.2

August, 2017

## 64-bit Preparations Completed

We have completed all necessary preparations for implementing 64-bit customizations. The main benefit with 64-bit is that InstantPlanner can access all available memory, and from now on, 64-bit is the primary development and release platform.

32-bit support will remain a little while longer, but please note that InstantPlanner 7.2 is the last version where you can choose the **Solid** option for CAD export. From the next version on, it will only be available in the 64-bit version.

## Reduce the Time Spent on Rendering with the Render Accelerator

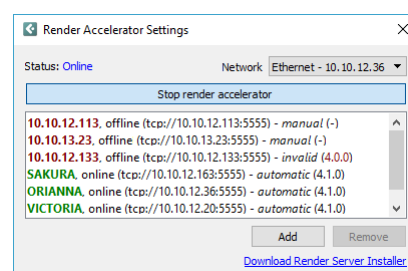
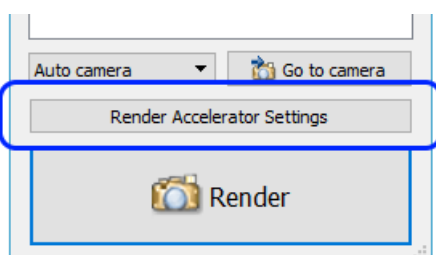
With the new **Render Accelerator** functionality, you can distribute rendering of images to other computers, set up on your local network, to reduce the wait before getting your final results.

Distributed rendering is a way to spread the process of rendering across one or several computers connected to a network. This, in turn, makes more use of idling computers and could reduce the time it takes for renderings to complete. One scenario could be a dealership that purchases a powerful computer designated for rendering, and then have all staff computers connect to that machine. The main advantage with this solution is that the rendering is done “elsewhere” and will not block or slow down your computer, thus letting you continue your work without interruption.

In InstantPlanner, this is implemented through two components: InstantPlanner software equipped with the Render Accelerator (*clients*), and a small freestanding application (*the CET render server*) that you install on each computer that should serve as a resource in the rendering network. Installing the render server is free for as many computers as you like and it doesn't require InstantPlanner or a license.

To download the render server, please follow this link to the Configura website: <http://www.configura.com/ip/support>

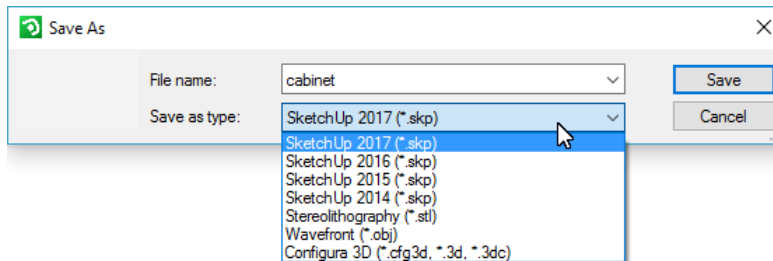
To use the Render Accelerator in InstantPlanner, you must turn it on in the **Render Accelerator Settings**. To open them, click the **Render Accelerator Settings** button in the **Render Settings** dialog.



Please note that distributed rendering does not perform well on slow network connections, for example wireless networks.

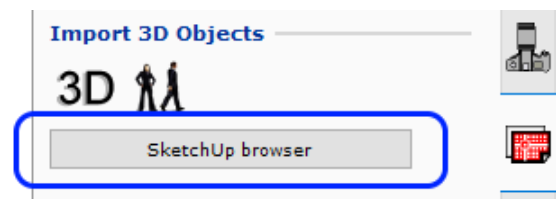
## SketchUp News and Updates

- InstantPlanner now supports exporting 3D objects as SketchUp models. After selecting your component(s), go to the **File** menu and select **Export selected component as 3D**. Change the export settings if necessary, and click **Export**. In the **Save as dialog** that opens, several SketchUp versions are listed in the **Save as type** drop-down menu. Make your selection, name the file, and click **Save**:

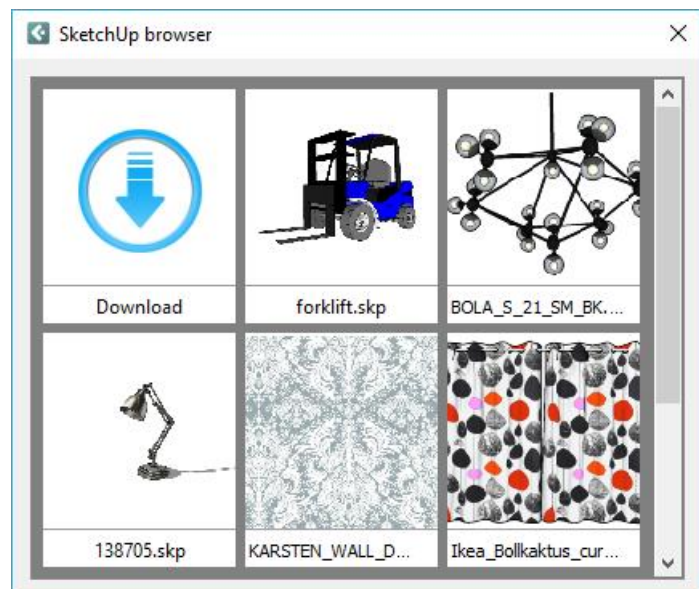


Due to Trimble (the makers of SketchUp) no longer supporting 32-bit, we can only offer the SketchUp export option in the 64-bit version of InstantPlanner. Also on that note, please notice that the SketchUp *import* in the 64-bit version supports the latest SketchUp format (2017), while the 32-bit version will not support SketchUp formats later than 2016.

- In the **Import 3D Objects** section of the **Import and Export** tab, you will now find a shortcut button to the SketchUp browser:



Clicking this button opens a window containing all SketchUp models that you have previously downloaded. From here, you can select a model and move the mouse pointer to the drawing area. Doing so will bring up the **3D Import Settings** dialog where the file path is already stated. You can change the scale or other properties, for example making materials double-sided\*, before applying your selections.



In the SketchUp browser is also a **Download** button that opens the **SketchUp 3D**

**Warehouse** dialog where you can browse for and download new models.

\* Please note that, to make a material double-sided, you must uncheck the **Use material/textures from model** option.

## Customizable Catalogue Objects

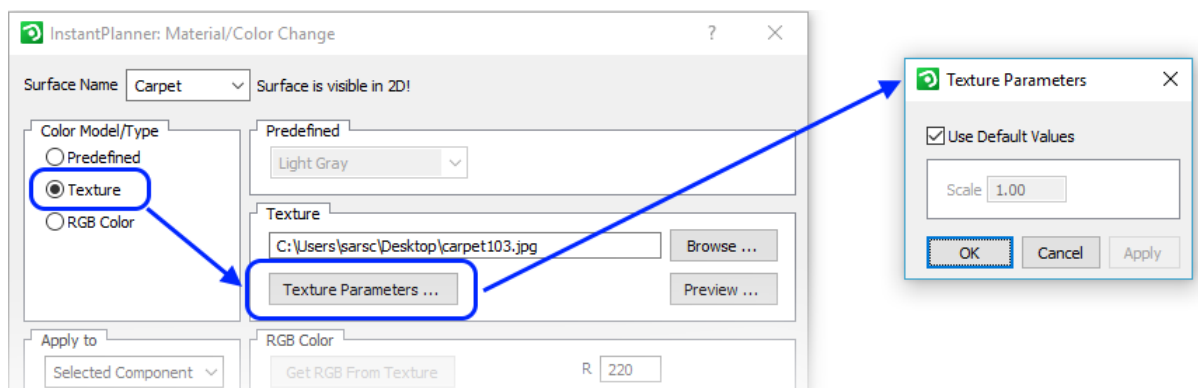
- For monitors, whiteboards, and framed photos inserted from the **Catalogue Browser**, you can now customize the look by setting your own background. It's a great way of adding a personal touch to your renderings!



## Texture Scaling

- If your InstantPlanner is set to use the render server for renderings, it's now easier than ever to scale textures. Texture scaling is done in the **Texture Parameters** dialog. To get there, select an object in the drawing, then right-click and select **Material/Color Change**. Select the **Texture** option and browse for the texture you want to use. Click the **Texture Parameters** button, deselect **Use Default values** and change the scaling. Remember to click Apply or OK (applies the changes and closes the dialog). Back in the Material/Color Change dialog, remember to also click Apply.

Notice that the **Texture Parameter** dialog has been stripped of many options to make it easier to use. Choosing which scale to use is the only parameter left for you to alter.

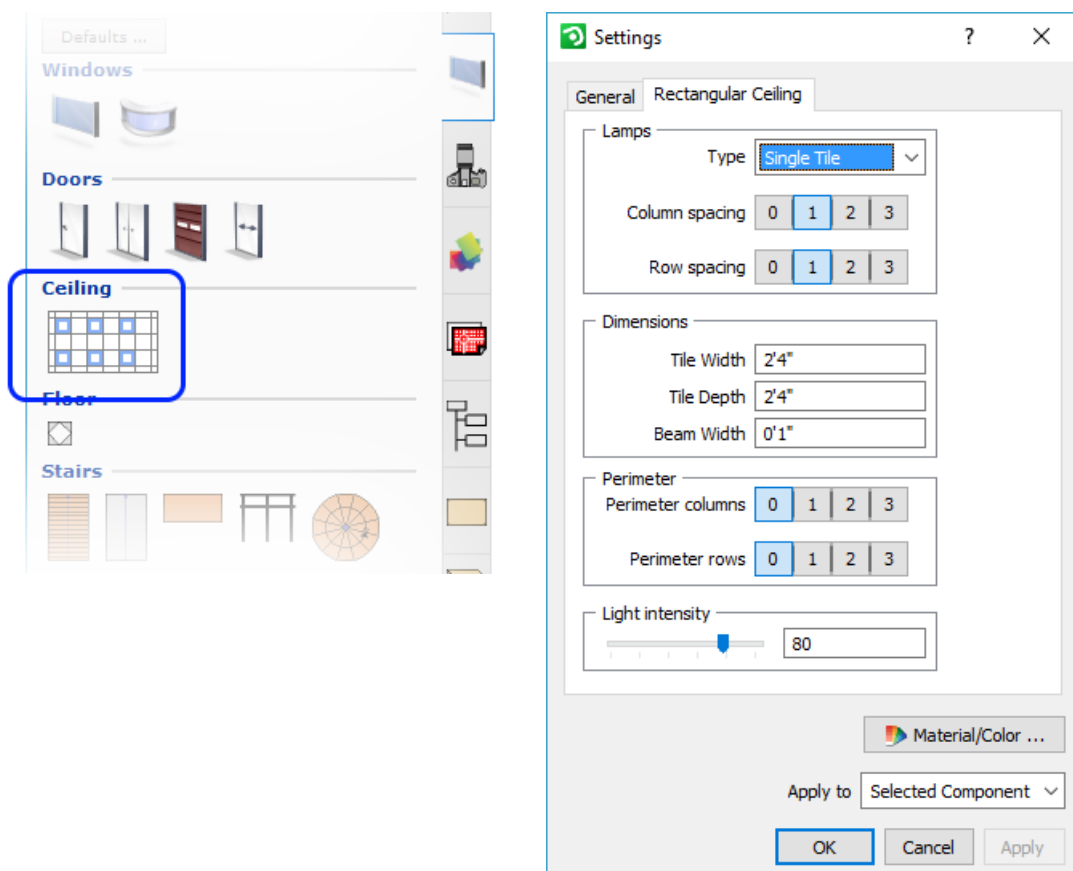


## Ceiling with Integrated Lights

- A new component has seen the light of day (pun intended!) in this release. It's a rectangular tiled ceiling component with integrated lights, found in the **House Component** tab, that can be stretched to the desired size and fitted with different light styles.

After placement, the ceiling will only display its outlines so that it doesn't obscure your view while working, but clicking the gray label will show the grid and the light sources as well as the yellow stretch nodes.

Right-clicking the gray label will bring up an extended menu with useful tools and options. You can also click the yellow triangle to bring up a compressed menu. From both menus, you are able to access the **Settings** menu where you can work with ceiling and light properties:

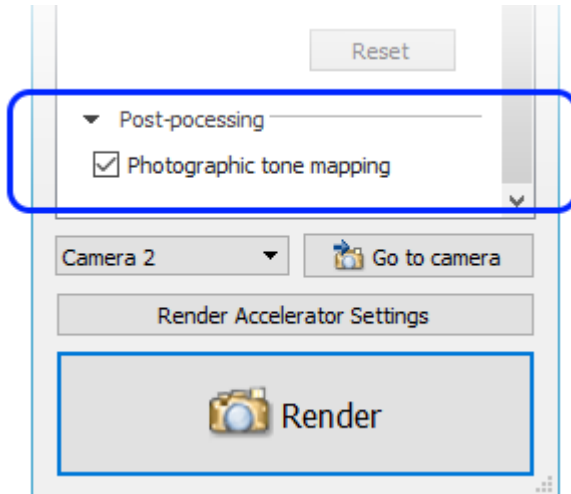


Check out the renderings below to see how these ceilings could look!

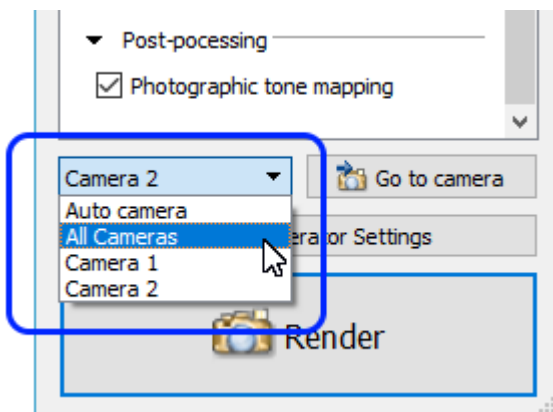


## Render Settings Modifications

- The tone mapping that was implemented last year only functioned properly if the white, infinite background wasn't visible through wall openings. To solve this, we have made the tone mapping an optional post-processing effect that can be disabled/enabled in the **Render Settings** dialog:



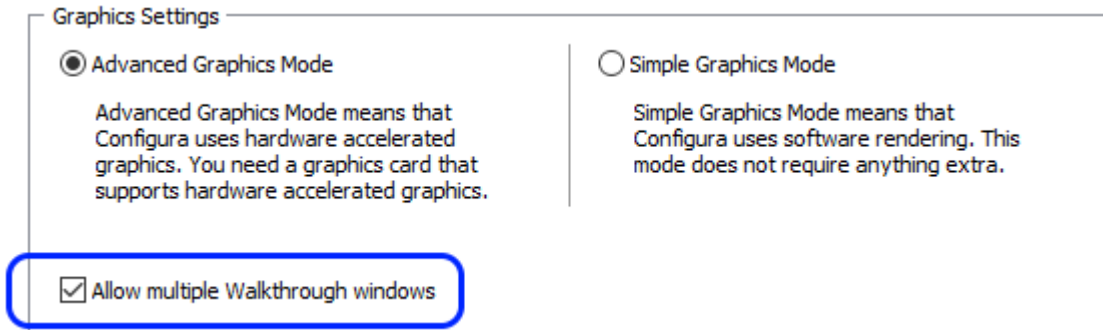
- When there is more than one camera in the drawing area, there is now an option in the **Render Settings** to render all cameras in one go.



Doing so will generate only one render job that is sent to the render server, and each camera view will then render as a different frame on the server. This will save time as InstantPlanner would otherwise have to create and transmit the render job multiple times to the render server. Please notice, that in reality, creating and transmitting the job usually takes considerably less time than the actual render, so the time saved may not really be noticeable. On the other hand, a dedicated render server transmitting over say a wireless network to a separate machine might take a lot of time and bandwidth, thus making the render all option the more important.

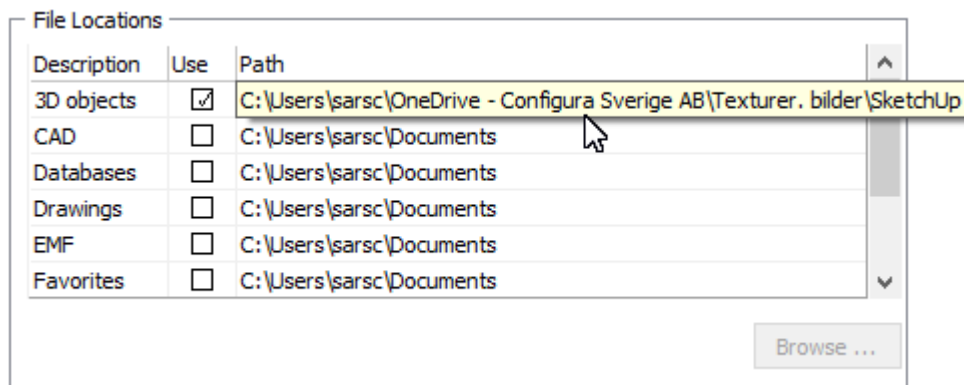
## Miscellaneous

- The setting **Allow multiple Walkthrough** windows, found in the **User Interface** tab in the **Control Panel**, is now working again. For a couple of releases now, InstantPlanner has always considered this option to be turned on, but now it can truly be turned on/off again.



If the box is not selected, the Walkthrough will only open one window. Please note that this only affects Walkthroughs that are opened after changing the option; already opened Walkthroughs will not be affected if the option is changed.

- We have fixed the issue with very long file paths not being fully visible in the **File Locations** in the **Control Panel**. If you decide to use another file path than default and the path is very long, you can now hover over it with the mouse which will bring out a tooltip with the full file path:



- Minor bug and stability fixes.
- After the 7.2 release, 32-bit InstantPlanner will no longer support import of STEP files.

For technical support, please send an e-mail to [support@instantplanner.com](mailto:support@instantplanner.com)