

# Catalogue Tools 9.5 • Release Notes

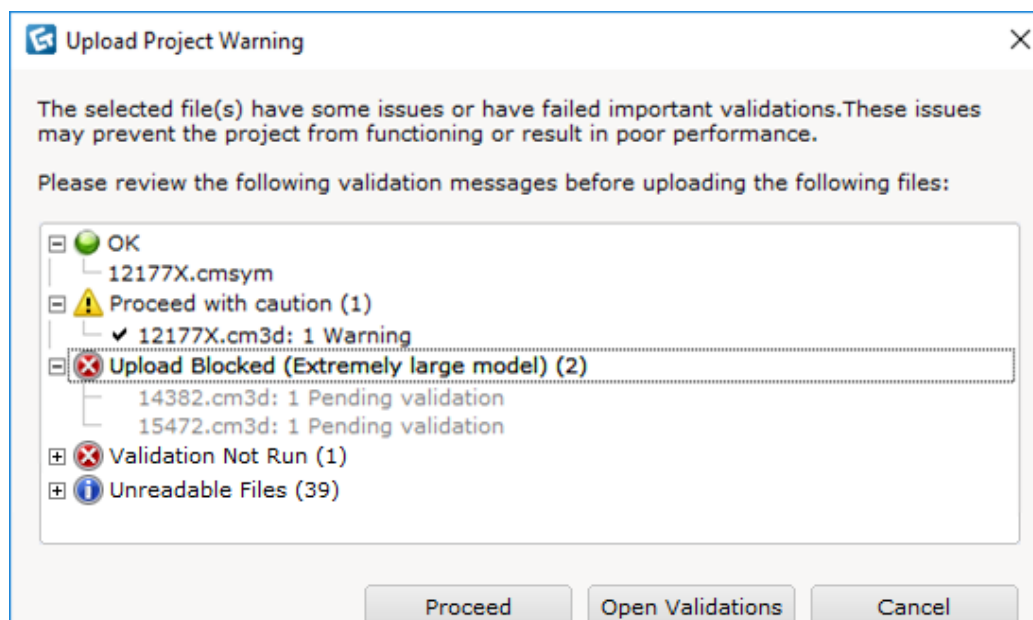
19 November 2018

## Catalogue Creator

### New Features

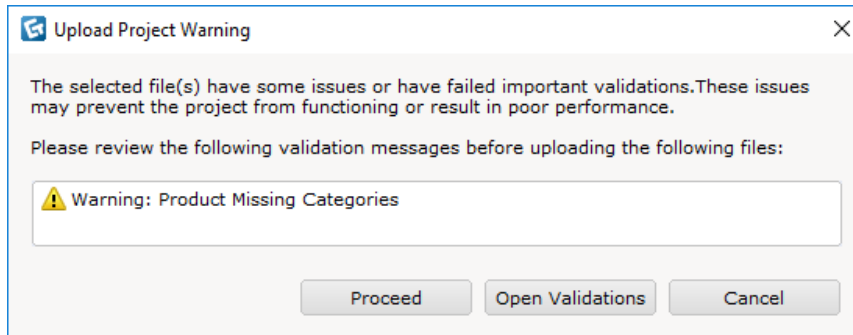
New feature blocks upload of extremely heavy models

- Shows warning when uploading resource files.
- Replaced the previous “Possible improper project” dialog that warned about running validation before uploading a project.
- High polygon models that exceeded 10 times the allowed limit will be blocked from uploading to the server.
- A warning message will pop up each time you try to upload the violated model(s) until it has been reduced to the allowed polygon range.
- Clicking on the **Proceed** button will upload the “OK” and “**Proceed with caution**” files while clicking on **Open Validations** button will navigate to the Validation card.
- Models that are not validated before uploading will also be blocked from uploading.



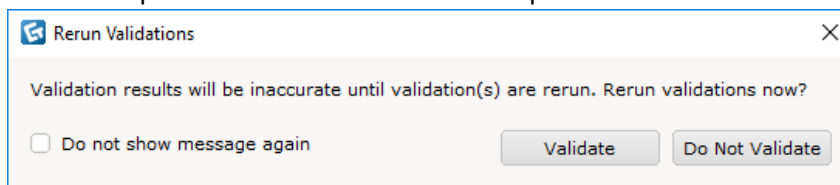
Added a warning message when uploading project file without categorizing products

- Shows warning when uploading a project file.
- Dialog will continue to prompt each upload until all products are categorized.
- Clicking on the **Proceed** button will upload the “OK” and “Proceed with caution” files while clicking on **Open Validations** button will navigate to the Validation card.



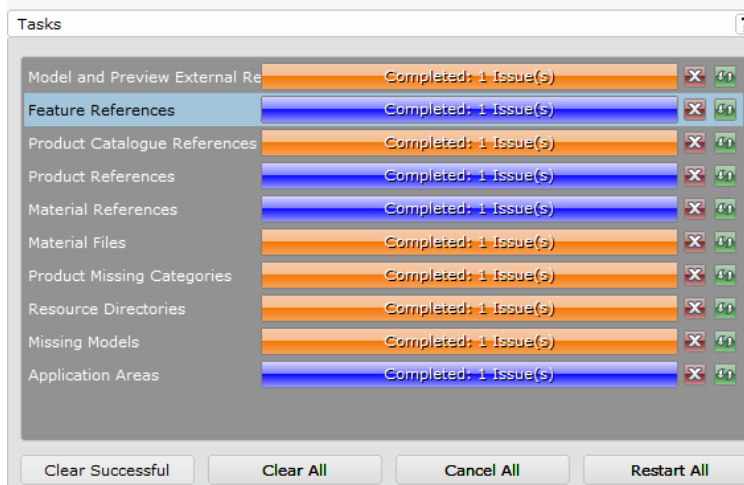
Added option to not automatically resolve validation tasks

- When running the following validations, the Automatically resolve feature now offers a “Do Not Validate” option for feature references and product references.



Added a Clear Successful button in the Validation card

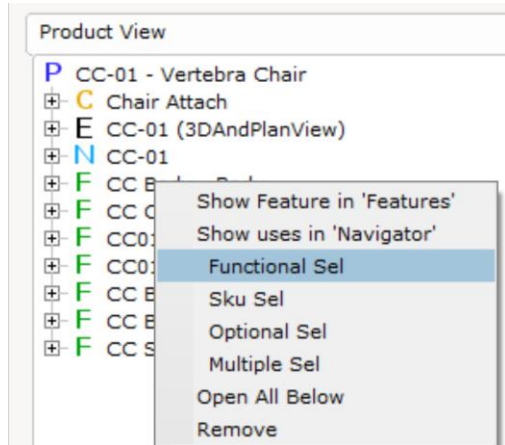
- **Clear successful** will clear all green passed tasks and leave information, warning and error tasks on.
- **Clear all** will clear all tasks.



*After clearing successful tasks.*

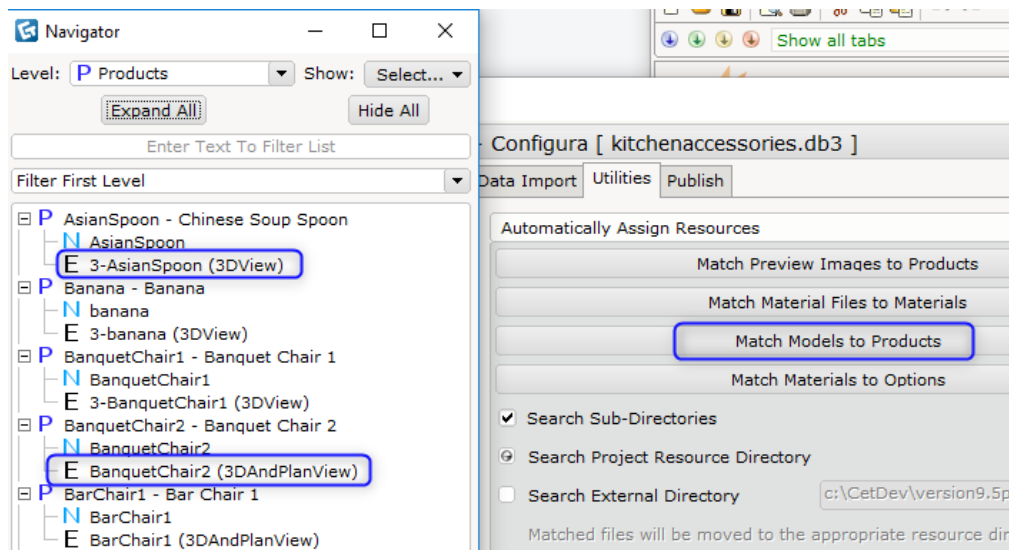
Added functional select, sku select, multiple select and optional select setting/vieweing menu to Feature's right click menu

- Works in Feature card, Navigator and Geometry card.
- Able to toggle the four selections through this menu.
- Able to view the setting of these selections.
- Restricted to turn on either optional select or multiple select as both cannot happen at the same time.



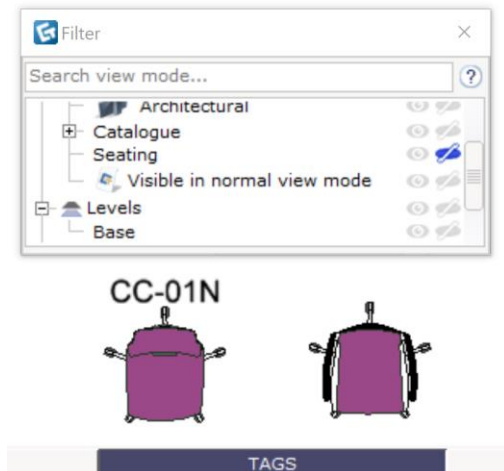
Added support to match models to products with “3-“ prefix

- Model's usage type will be assigned as 3DView.



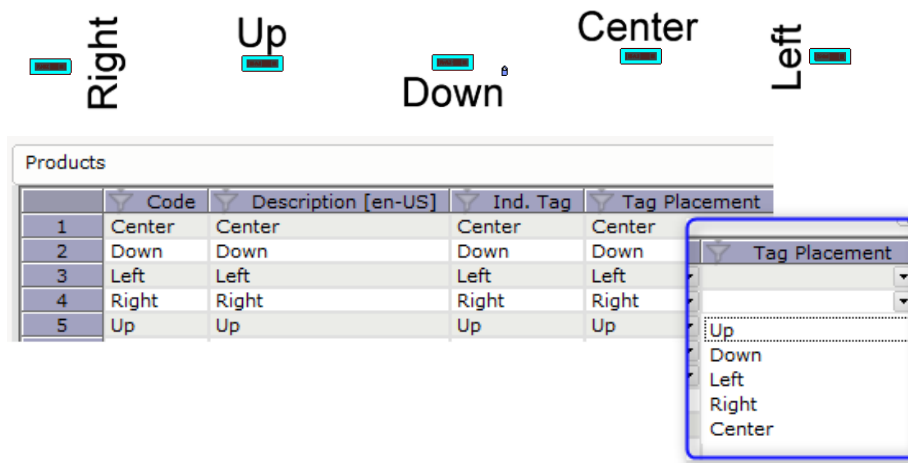
Added a new column, Ind. Tag Category, in the Products card

- Works the same as normal categories in CET Designer; toggle in the Filter dialog to show/hide tag in TAGS view mode.

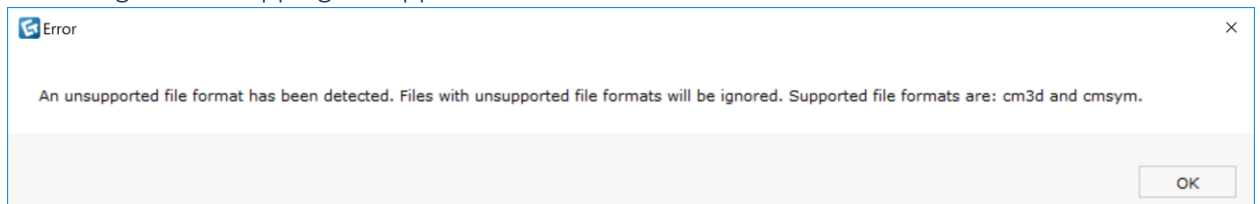


Added a new column, Tag Placement, in Products card

- Tag placement column has five options: up, down, left, right and center.
- Placement of the tag (ind. Tag) will be based on the tag placement's arrangement. Default placement will be 'up'.

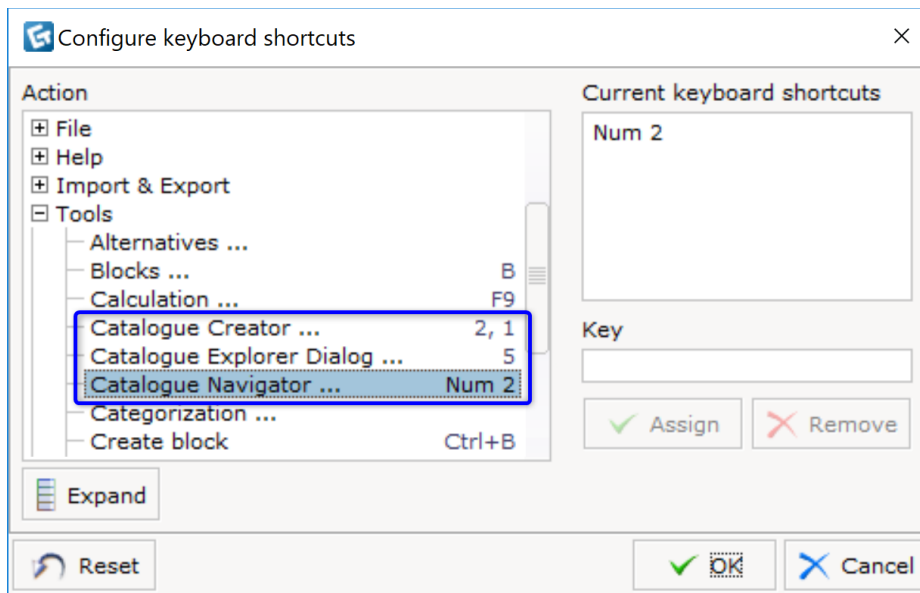


Prompts warning when dropping unsupported file formats to Products card



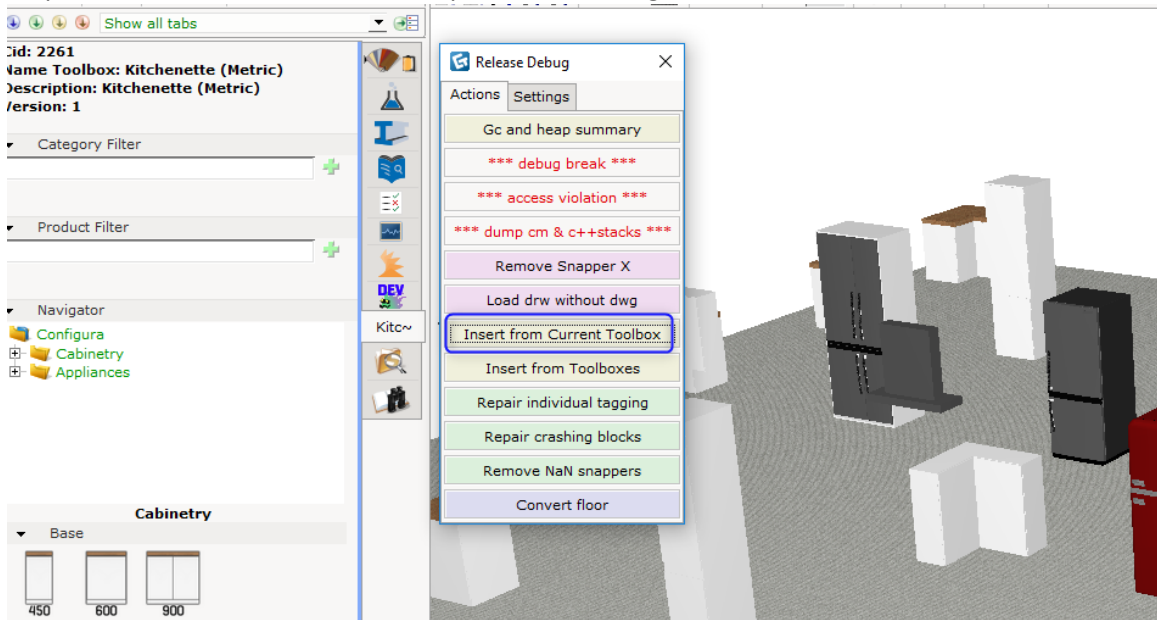
Added key binding for Catalogue Creator, Catalogue Explorer and Navigator

- Accessible from CET Designer's keyboard shortcuts menu.
- Need to start Catalogue Creator before using key binding for Navigator.



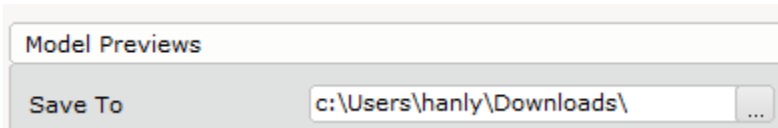
Added support for “insert all from current card” for preview toolbox

- Available in developer mode only.
- First create a preview toolbox from catalogue explorer and then use C-M-F12 to select “insert all from current card” option.
- All products from the toolbox will be placed in drawing area.



## Bugs Fixes

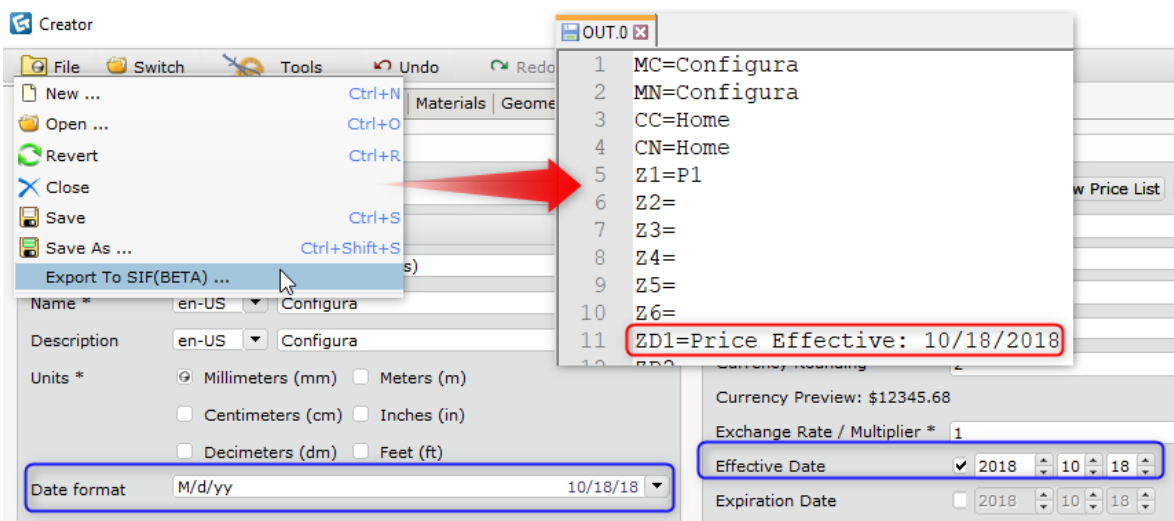
- Fixed problem with the Save To location not remembering the file path.
  - The path is now included as part of catalogue preference.
  - Path will remain after each manual change.



- Fixed problem with material application not working on a certain symbol.



- Fixed issue with the Catalogue Creator not exporting expiry date to SIF in .0 files.
  - Catalogue Creator now makes sure that the date format is selected before exporting to SIF



- Fixed problem with the Search External Directory's URL field getting placed in the wrong position in the Utilities card.
- Fixed problem with the toggling Feature column in the Option spreadsheet affecting the Feature column in the Products card.
- Fixed issue with the Catalogue Creator control panel not being visible.

- Fix for discounts and package count now being exported to OFDA XML format.
  - Buy% as Order Dealer Discount
  - Sell% as End Customer Discount
  - Package Count as PackageCount

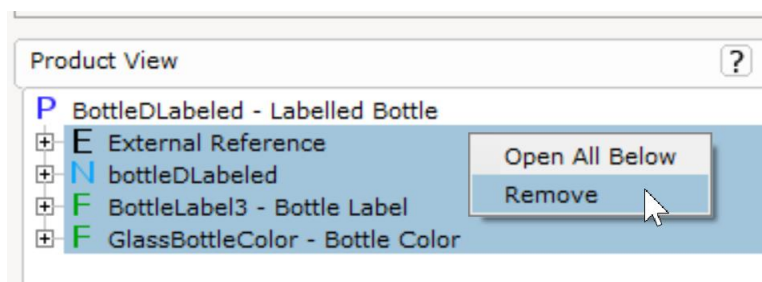
Package Count -	Sell % -	Buy % -
	40 %	82 %
	40 %	82 %
4	40 %	82 %
	40 %	82 %
	40 %	82 %

```

<OrderDealerDiscount>18</OrderDealerDiscount>
<EndCustomerDiscount>60</EndCustomerDiscount>
</Price>
- <SpecItem>
  <Number>33211</Number>
  <Description>Table leg</Description>
  <PackageCount>4</PackageCount>

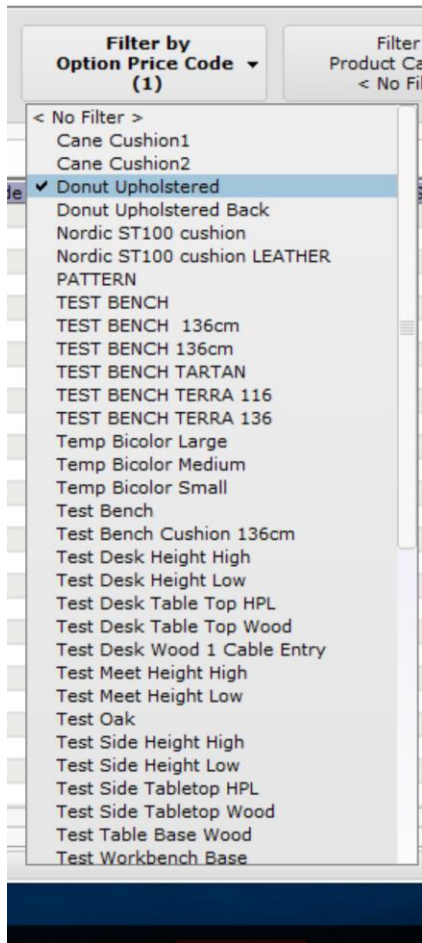
```

- Fix for vendor and enterprise values not exporting correctly to OFDA XML.
- Fix for problem with import and export multi-graphics from/to SIF to/from Catalogue Creator.
  - Importing from SIF to Catalogue Creator using Catalogue Creator now accepts multiple graphics.
  - Exporting multiple graphics from Catalogue Creator to SIF now works accordingly.
- Fix for exporting functional feature to Project Matrix SIF.
  - Export features with functional select is no longer turned on in Project Matrix SIF.
- Fix for the property box remaining in the drawing area even when the symbol had been removed.
- Fix for the property box size not staying pinned.
- Fix for connector filters not being retained when a new connector was created in the Geometry card.
- Fix for inability to delete multiple items in the Product View on the Geometry card.
  - Works with <DEL> key and right click, remove.



- Fix for inability to paste the same code after removing it from the spreadsheet.
- Fix for the table of contents missing when importing SIF files in the Data Import card.
- Fix for issue with switching from one project to another with fewer columns in the spreadsheet.
- Fix for issue with dragging and dropping to picklist.

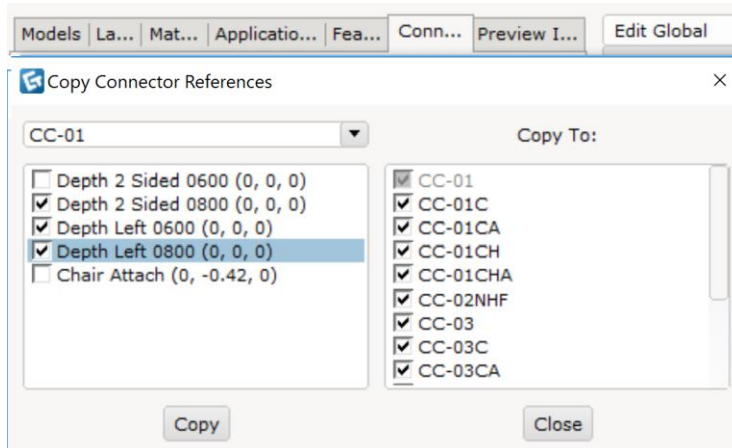
- Fix for the inability to remove assigned external reference key.
- Fix for the option price codes filter in the Products card
  - The option price code filter menu in the Products card will always be a few inches away from the window's task bar.
  - The filter menu is sorted in alphanumerical order.
  - Added a <No Filter> filter to act as a default filter and to remove all selected option price code filters.
  - The option price code filter button will be bold when any filter is selected.



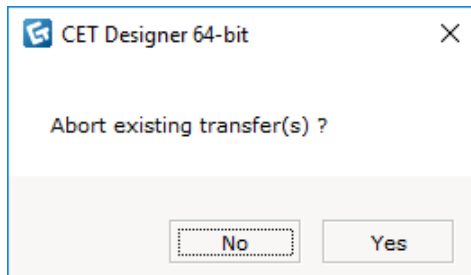
- Fixed problem with the Catalogue Creator Control Panel not appearing on the same screen as the Catalogue Creator itself.
- Fixed problem with filters being removed when columns were turned on/off through the visibility column menu.
- Fixed issue with CAD/DWG export not working properly for some catalogue objects.
- Fixed issue with cmSym objects disappearing from the drawing area when enabling/disabling the LOD setting in the Control Panel.
- Fix for bad reference feature not being reflected immediately the Geometry card when the feature was deleted.



- Updated the Copy Connector behavior in the Geometry – Connector tab.
  - Dialog now stays open after clicking the “Copy” button.
  - It is now possible to do multiple select with Ctrl-A and Shift+click on both products and connectors.
  - Supports toggling with the space bar.

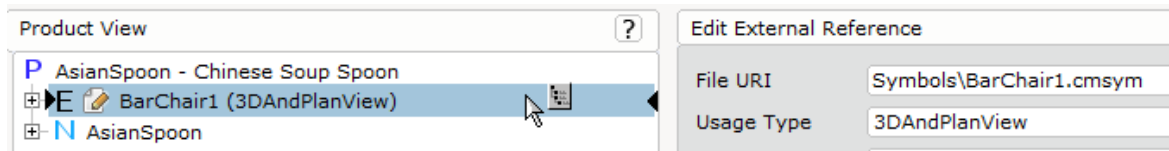


- Fix for Actor not being valid when starting Download.
- Fix for portfolio status being stuck at “One moment please” when adding an administrator / member email list.
- Fix for portfolios appearing in the wrong company label.
- Fix for continuous loading issue when adding a blank email address to a portfolio.
- Fixed portfolio not accepting numbers only as portfolio name.
  - Numbers only as portfolio name is not allowed.
- Fixed problem with search text updated to search result in portfolio card.
- Fixed portfolios not showing in portfolio card.
  - Note that Portfolios still will not show if connection is down.
- Fix for the Exit dialog being displayed twice.

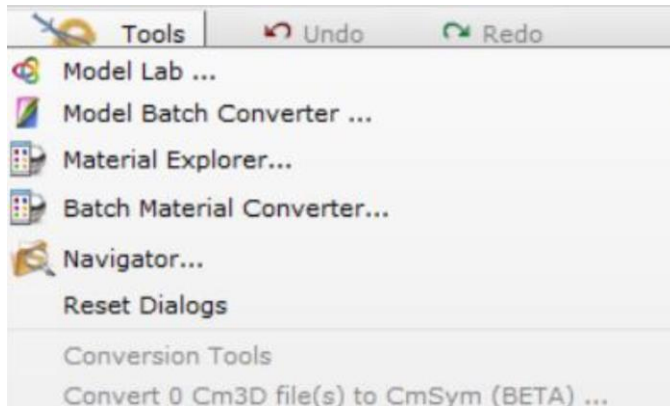


- Fixed problem with application of a user material to a cmSym symbol that would affect all instances upon refresh.
- Fixed problem with Edit Graphics not working for cmSym models.

- Fixed problem with inability to replace cmSym external reference through drag and dragging in Geometry card.



- Moved the Cm3D to CmSym conversion tool from the File menu to Catalogue Creator's Tools menu.



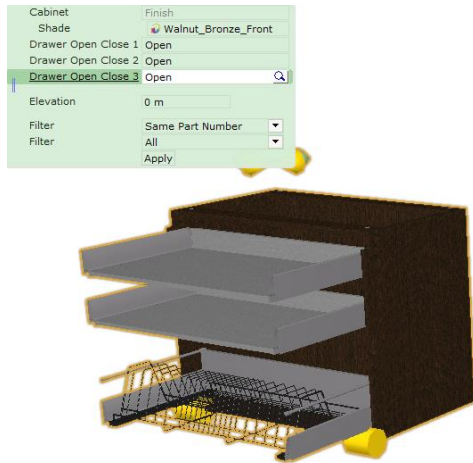
- Fixed DsPData to get default material from DsPDataProxy.
- Fixed issue with the 5-7 minute delay that could occur when publishing a catalogue.
  - Happens only to catalogue that uses customized table that create unique keys that were too long.
- Fixed problem with connectors disappearing in Geometry's 2D and 3D views after changes made.
- Fixed problem with photo quality rendering not working for elevated and zoomed (using Shift+Scroll) previews.
- Fixed problem with the underscore character not showing in Catalogue Creator's spreadsheet.

Products		
	Code	Description [en-US]
1	dA	this_is_working_fine

- Fixed problem with portfolio names not updating instantly after being changed.
- Fixed problem with catalogue symbols bounding boxes after symbol replaced.

## Crash fixes

- Fixed issue with the date format causing a crash when loading a project file in Catalogue Creator with Window's region set to Chinese (simplified).
- Fixed crash when performing an Undo action in the Products card.
- Fixed dsGraphicalSpecialCacheKey collision as it is possible to have same placement keys for different options combination.

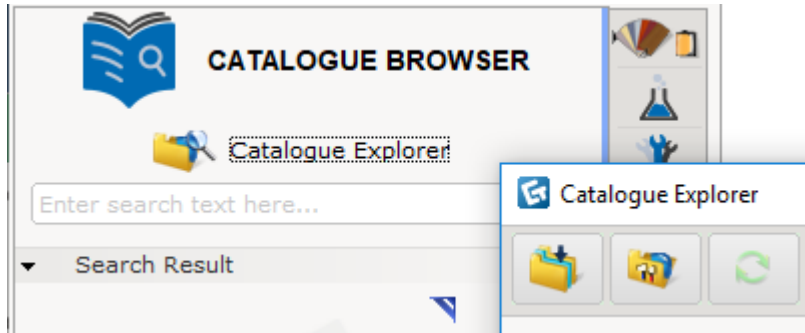


- Fixed p issue with the product code not updating automatically in the Product Catalogue card's table of contents.
- Fixed issue with a crash that would occur when opening a portfolio.
- Fixed issue with a crash that would occur when clicking the Set TL location of Project File button without having a project file loaded.
- Fixed issue with the copy and paste commands in the spreadsheet.
- Fixed issue with the Navigator not updating instantly .
- Fixed issue with a crash that would occur when closing and reopening the Catalogue Creator.
- Fixed issue with a crash that would occur when deleting a feature or right-clicking a frame gap in the spreadsheet.
- Fixed issue with a background crash that would occur when trying to snap deck and column of Industrial Equipment together.
- Fixed issue with the copy and paste commands in the Products card.

# Catalogue Browser

## New Features

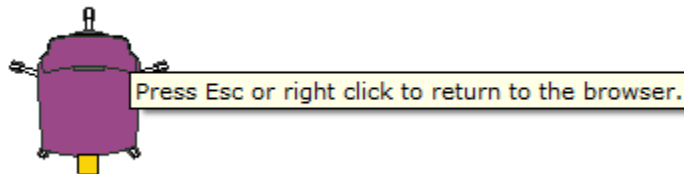
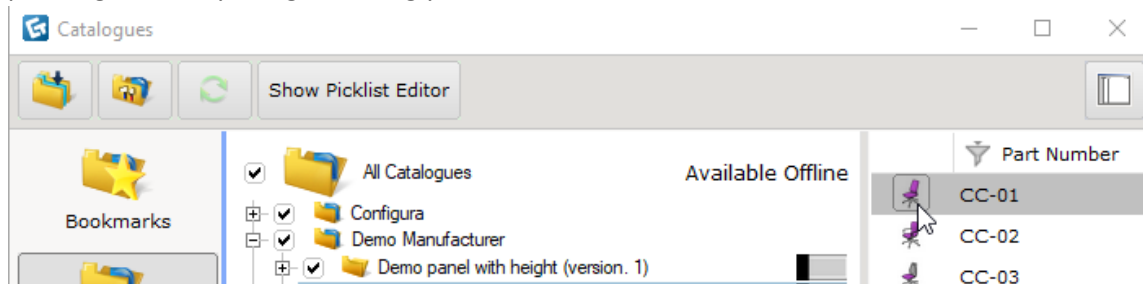
Rename Catalogues.. window to Catalogue Explorer



Moved the Picklist Editor button to the top of the Catalogue Explorer dialog.

Hides the Catalogue Explorer dialog when inserting a symbol to the drawing area

- The Catalogue Explorer dialog will be hidden when inserting a symbol to the drawing area until pressing <Esc> key or right clicking your mouse.

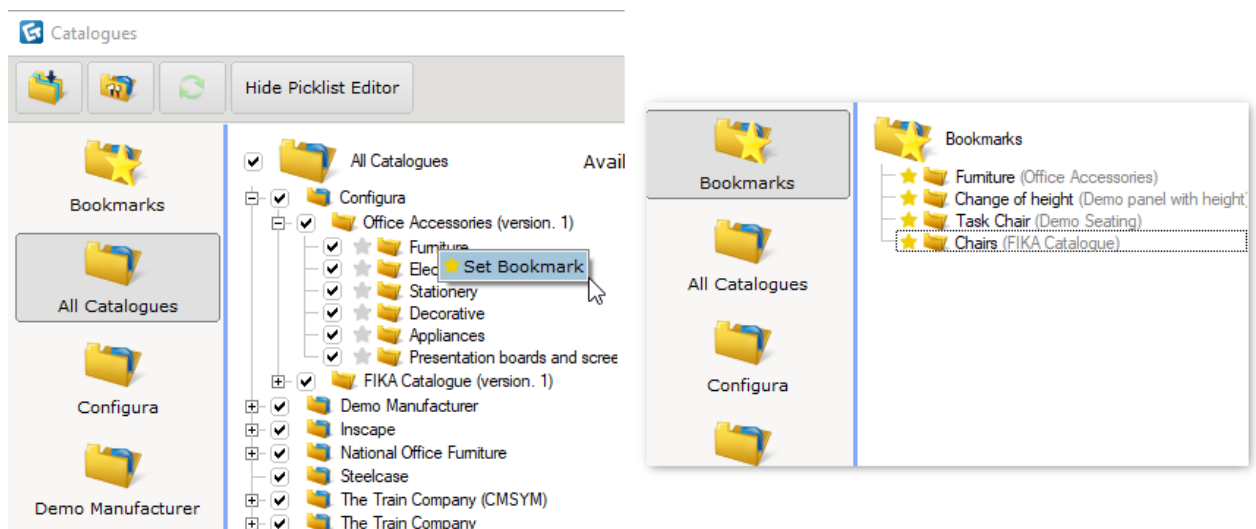


Remembers Catalogue Explorer's user settings

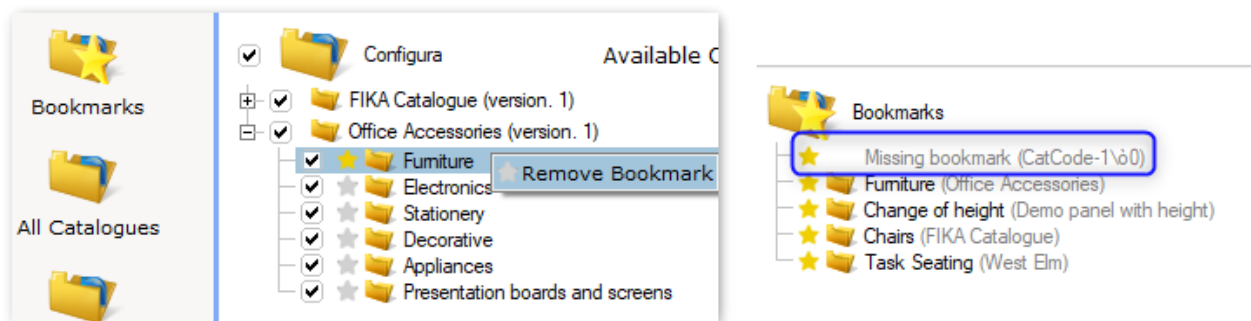
- The following settings are saved until the next change :
  - Showing/hiding the Picklist Editor
  - The size of the Catalogue Explorer dialog
  - The position of the horizontal bar between the browsing and viewing areas
  - The position of the product in the viewing area

## Added bookmark functionality to the Catalogue Explorer dialog

- Right click on any product level in any of the catalogues available in the Catalogue Explorer dialog to set the bookmark.
- Bookmarked product levels will appear in the bookmarks page with the product catalogue name stated in the bracket.
- The bookmarked product level does not work recursively.
- Bookmarked products can be inserted to the drawing area by clicking on the preview image button.



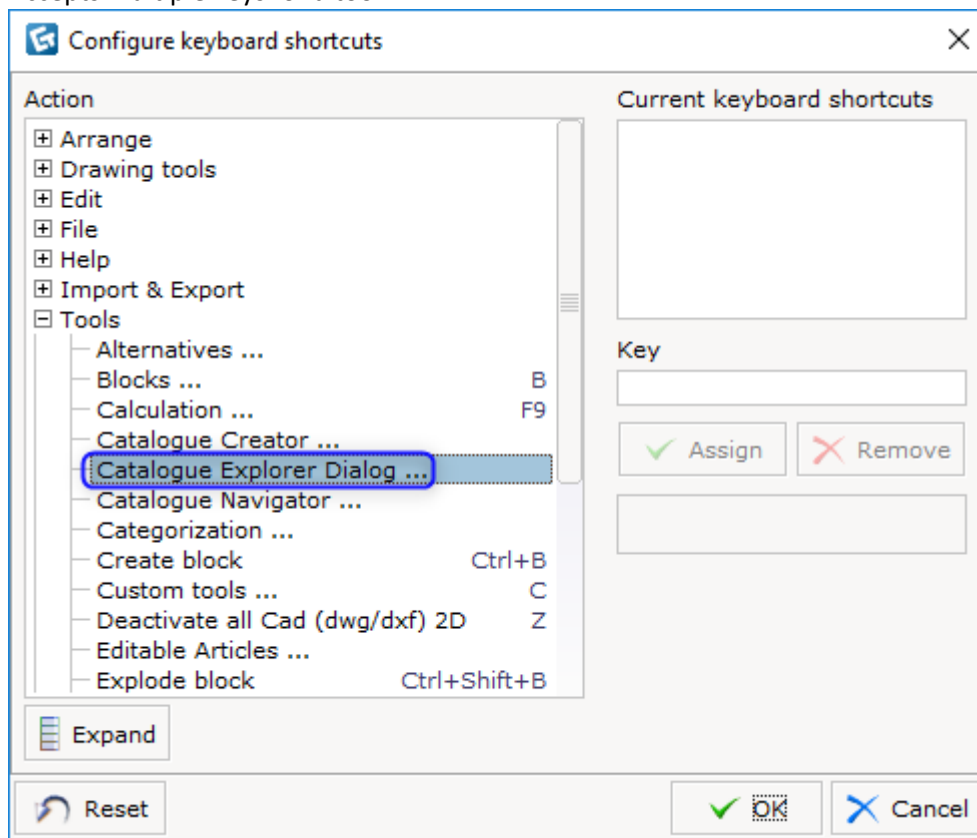
- To remove a bookmark, toggle the yellow star in the Bookmarks page or right click on the product level.
- To navigate to the catalogue from the Bookmarks page, right click and select "Go to location".
- If the catalogue is uninstalled without the bookmark being removed first, the "Missing bookmark" label will be shown.



- A Creator project that is loaded in the Catalogue Creator is not entitled to this feature.
- The bookmarked items will be saved as bookmarks.cmcbm in folder C:/Users/\*/Documents/CET Documents/Catalog Bookmarks/

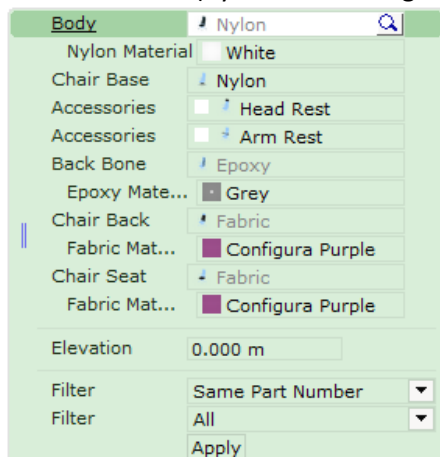
Added key binding shortcuts for the Catalogue Creator, Catalogue Explorer dialog and Navigator

- The following settings are saved until the next change.
- Accepts multiple keys for a tool.



New quick properties UI

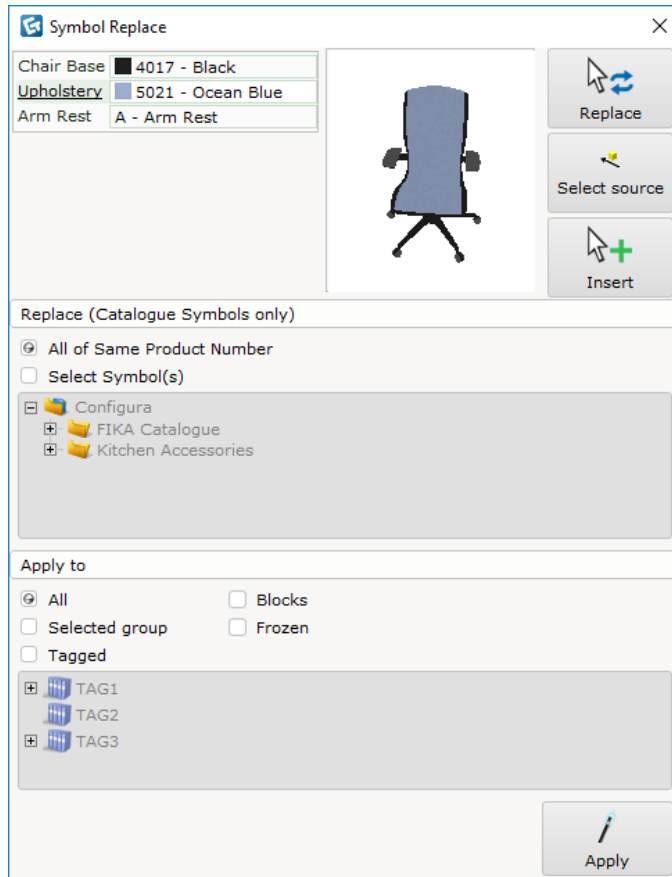
- Quick properties dialog for catalogue symbols has a new look !
- The dialog can now be
  - Moved (by dragging the || sign around)
  - Hidden (by double clicking the || sign)



Remembers user settings in the Catalogue Explorer dialog

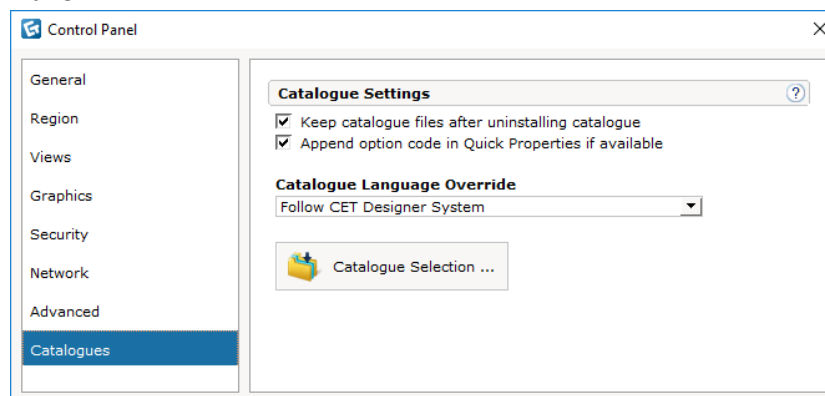
- The dialog will remember the choices that user has made concerning showing/hiding the Picklist Editor, dialog size, selected view mode, position of vertical bar between browsing and viewing area.

Updated Symbol Replace UI

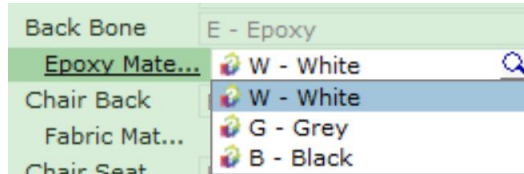


Catalogue Settings dialog merged with the CET Designer Control Panel

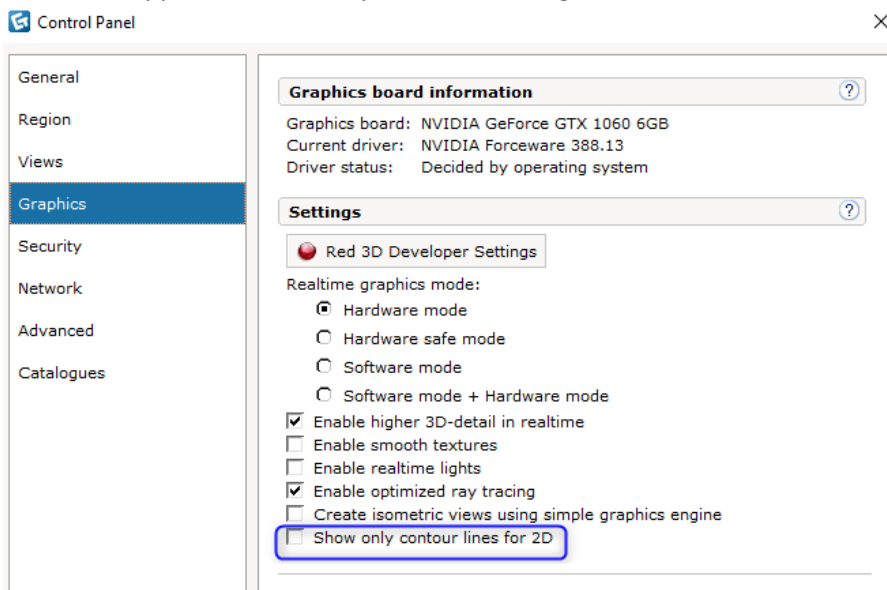
- The old Catalogue Settings dialog has been merged into the Catalogue tab in the CET Designer Control Panel.



- **Keep catalogue files after uninstalling catalogue** : Decides if turning off/uninstalling a catalogue will remove the previously downloaded catalogue data from the local directory.
- **Append option code in Quick Properties if available** : Shows the option code in the quick properties dialog of a catalogue object.



- **Show Geometry lite** option has been removed and **show 2D lines** is enabled at all time.
- **Catalogue Selection** that shows accessible catalogues can be accessed from both the CET Designer Control Panel and the Catalogue Explorer dialog.
- Simplified preferred languages to catalogue language override.
- Moved “Show only contour lines of 2D” option to the Graphics tab in the CET Designer Control Panel as it applies to all items placed in drawing area.



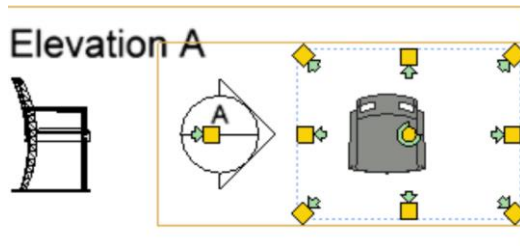
## Bugfixes

- Fixed Catalogue Browser search
  - Accurate search for product code contains dash (-).
  - Faster search process.
- Fixed opening catalogue explorer slow performance issue
- Fixed spacing between columns in finish legend



FINISH SUMMARY		
Description	ID / Code	Enterprise
Epoxy Black	Epoxy Black	Configura
Fabric Khakis	Fabric Khakis	Configura
Nylon Black	Nylon Black	Configura
Rubber	Rubber	Configura
plain light gray	plain light gray	Configura

- Fixed side elevation view area's animation.



- Fixed catalogue explorer dialog after showing/hiding picklist

## Model Lab Bug Fixes

- We have restructured and rewritten the .obj export in the Model Lab.
- The visual feedback provided when switching a model between Single and Double sided has been improved.