

Catalogue Tools 9.5 Patch 2 • Release Notes

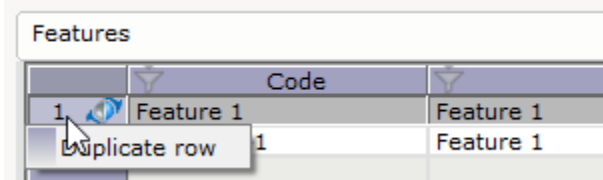
25 February 2019

Catalogue Creator

New Features

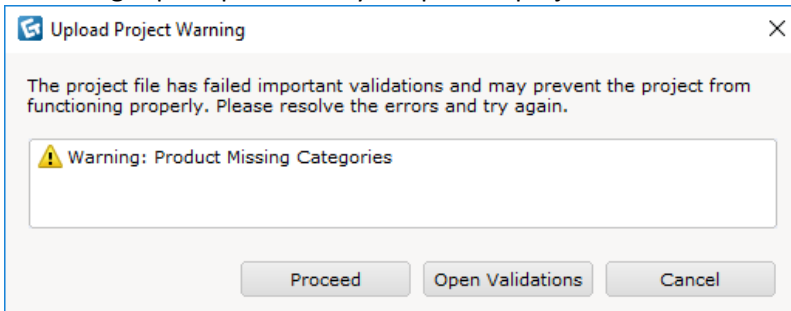
Added ability to duplicate feature row.

- Right click on a Feature index to duplicate a row and its content.

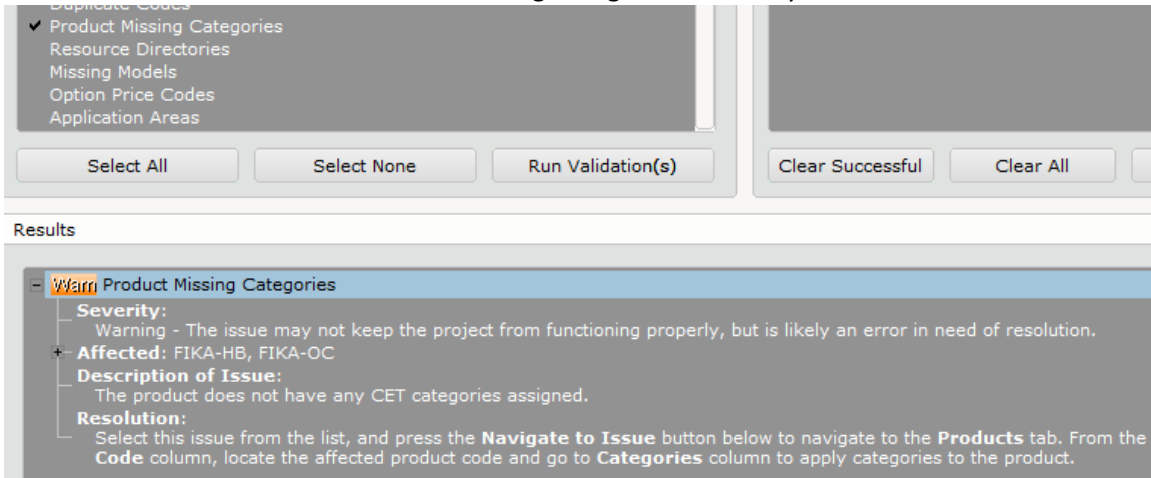


Added notification for missing product categories

- A warning is prompted when you upload a project file without assigning any category.

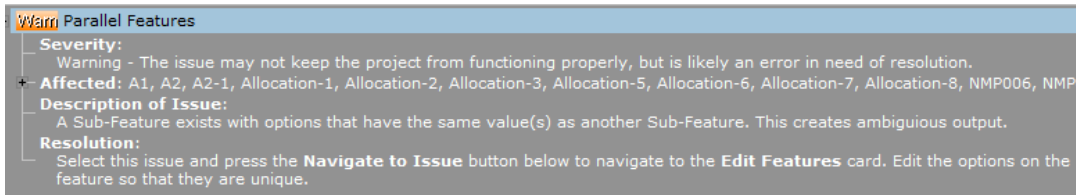


- Also added a validation task “Product Missing Categories” to notify users.

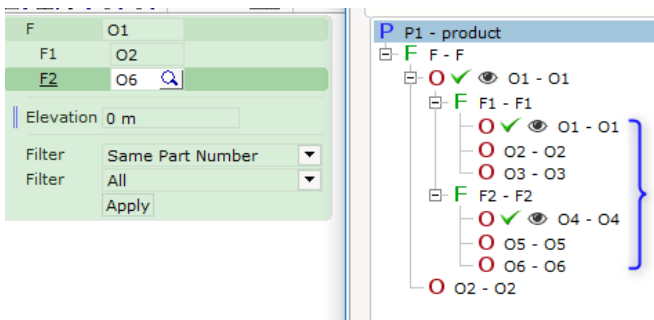


Added validation task to detect parallel features.

- Multiple sub features with at least one identical option code will be flagged as warning under this validation task.
- Users is encouraged to use the multiple features (enable multiple select) option instead or use different option code if parallel feature structure is a must.



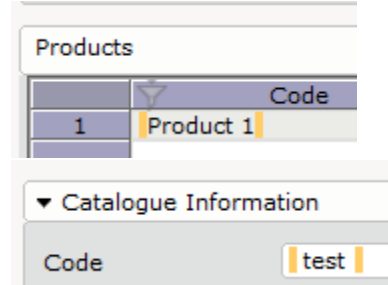
Warning message



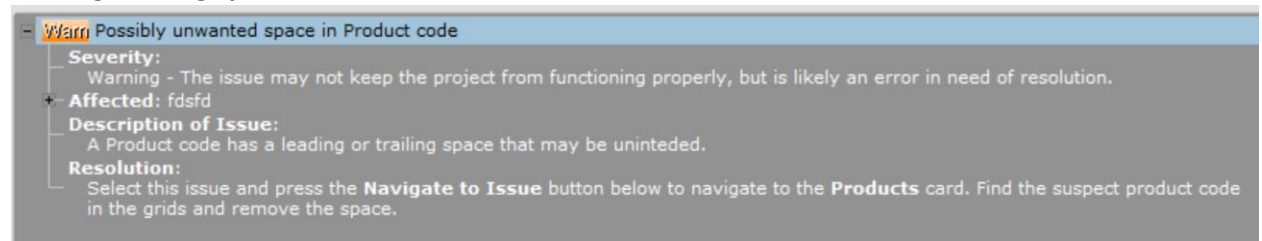
Parallel features of different option code are allowed; validation shows pass.

Added validation and highlight to show blank space at the beginning and the end of a code.

- Highlights in the Enterprise, Product Catalogue, Product, Feature, Option, and Material code to prevent accidentally inputted space.

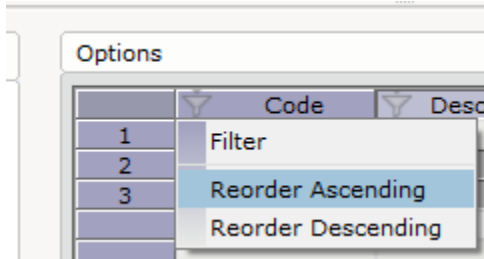


Flagged warning for unwanted space in code column of the project in the validation task **Leading/Trailing Spaces in Codes.**



Now possible to re-sequence options by reordering option code the Option spreadsheet.

- Note that once you reordered the option code sequence of a published catalogue, loading old drawing will have issue, use with caution.

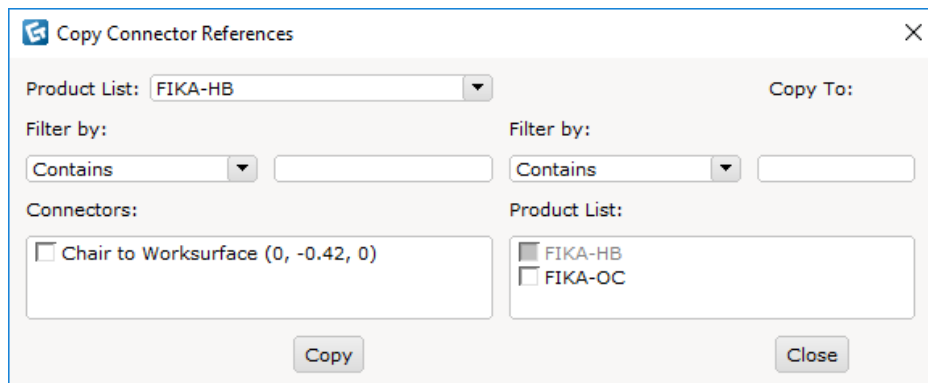
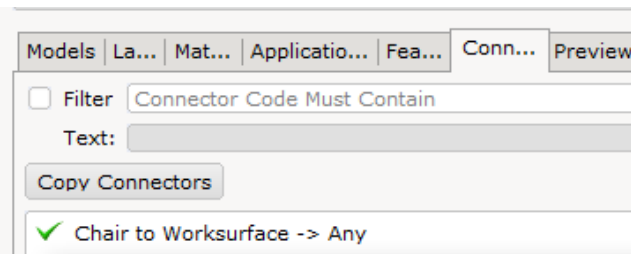


Included sorting behaviour in saved preference

- Ascending/descending sorting of columns will now be saved along with the project file if you turn on **Save/Load Preferences** in **Creator Control Panel**.

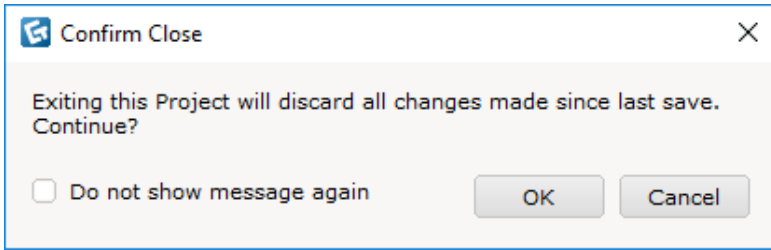
Added filters in the Copy Connectors dialog.

- Filters added to both connectors and product list sections.

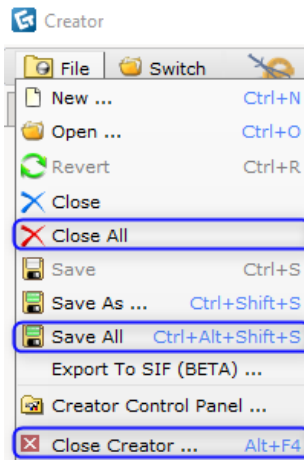


Prompts warning when closing a modified project without saving

- A dialog will be prompted when you close a modified project with the Close or Close all buttons in the File menu.

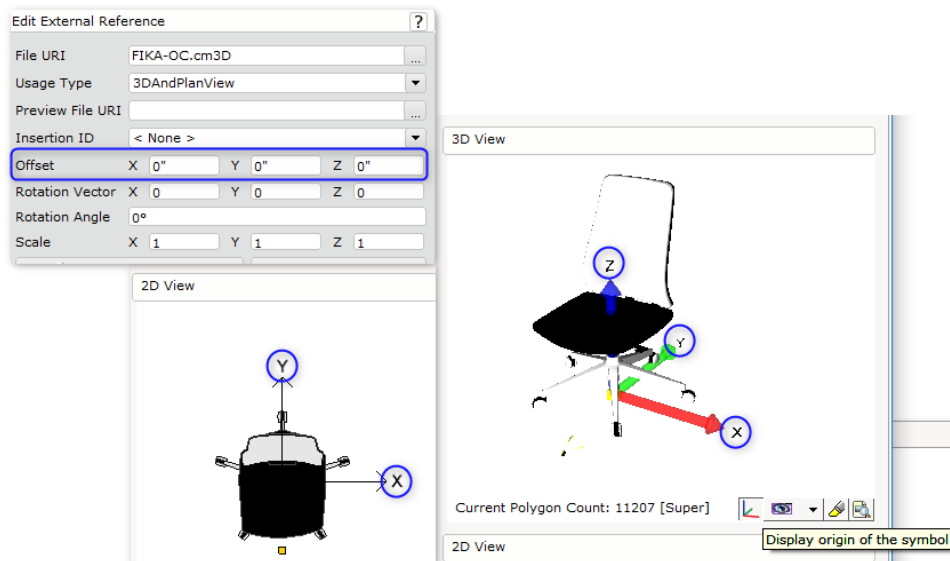


Added Close All, Save All, and Close Creator options to the Catalogue Creator File menu



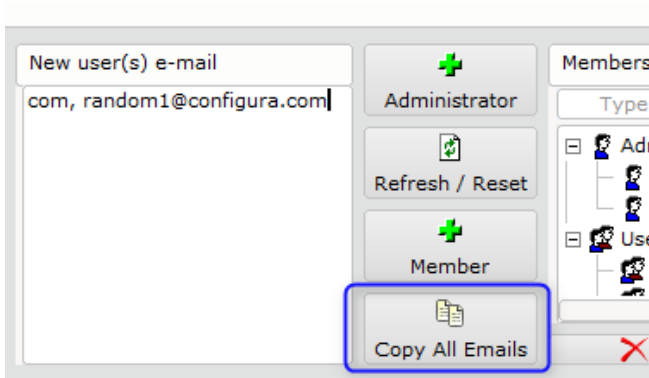
Added axis labels in both 2D and 3D views in the Geometry card

- Note that the Display origin of the symbol option needs to be activated in order for this to be visible.



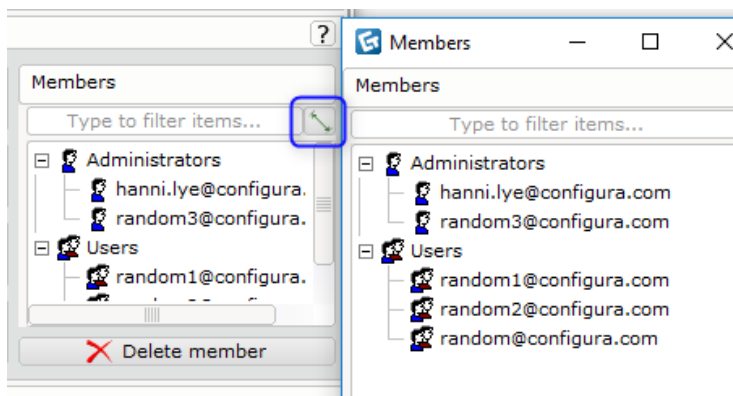
Added a Copy All Emails function

- Click the button to copy all existing email addresses in the members list and use Ctrl-V to paste in the New user(s) e-mail box.



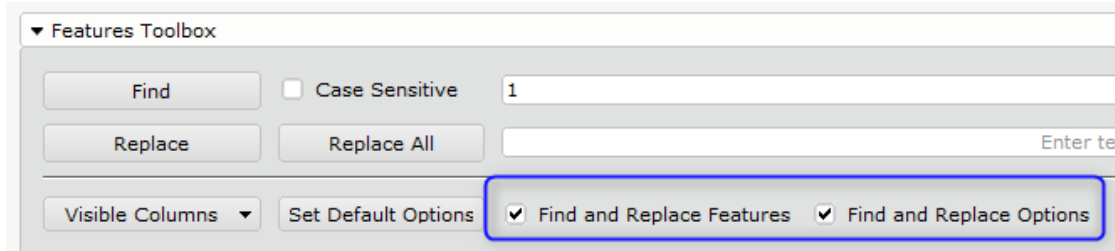
Added filter functionality in members list

- Added filter functionality to the members list in Publish -> Portfolio card, as well as a button for opening the Member List as a separate dialog



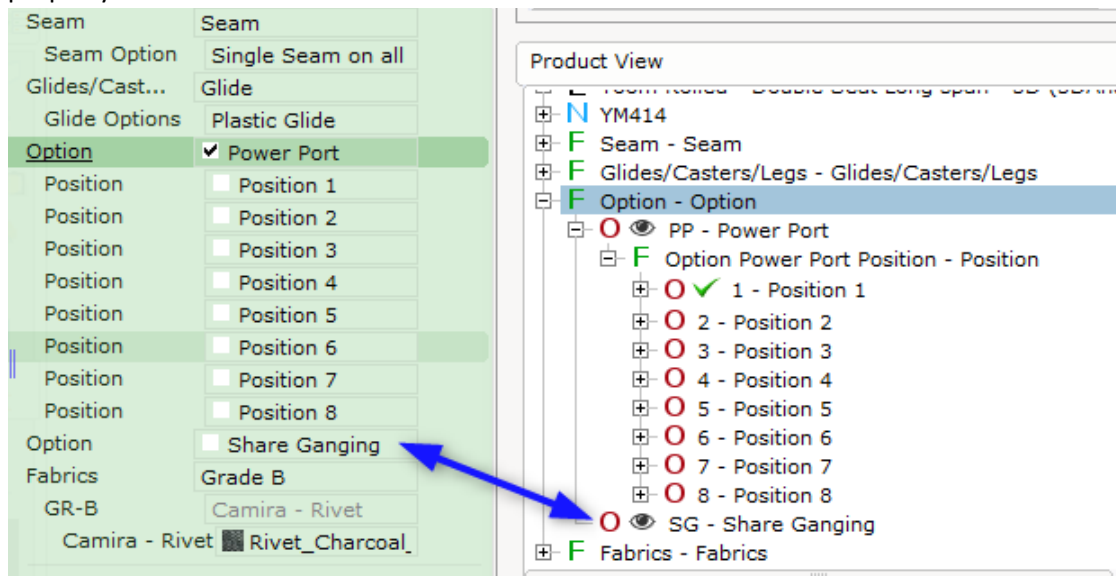
Added functionality to find and replace code and description in option spreadsheet

- Works for option code and option description.

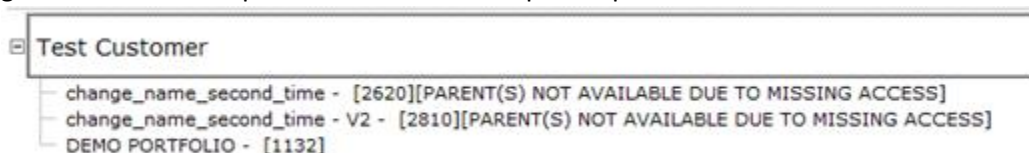


Bugs Fixes

- Fixed problem with model not being automatically loaded in Model Lab after navigating to issue of flagged z-fighting warning.
- Fixed problem with validation results not being cleared after switching to a different project.
- Fixed problem with hanging **Mesh Data** validation tasks.
- Fixed problem with the horizontal scroll bar not reflecting the column position displayed.
- Fixed problem with double-clicking on a nested feature in the Feature view not correctly navigating to the correct feature.
- Fixed problem with the project file being removed if Enterprise name or Enterprise code had been removed prior to saving the file.
- Fix for missing Japanese and Chinese translations of Extension names.
- Fixed problem with translations missing when the Catalogue Creator was launched.
- Fixed problem with getting a null value as default option in the property box.
- Fixed problem with nested features in an optional select that would not display correctly in the property box.

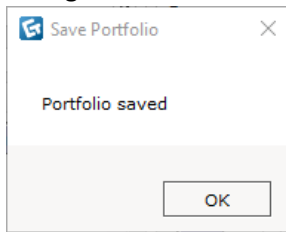


- Fixed problem with nested options that would display correctly in the COM dialog but not in the property box.
- Fixed problem with the Portfolio card not being visible in the Publish card when access had been granted to the child portfolio but not to the parent portfolio.

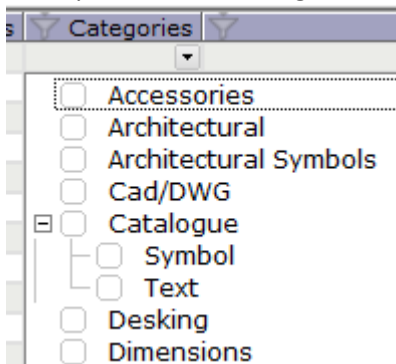


- Fix for filters not looking the same in the local and server spreadsheets of the Publish card.
- Disabled the "Compare server/local timestamps" functionality when server files are during loading/refreshing.

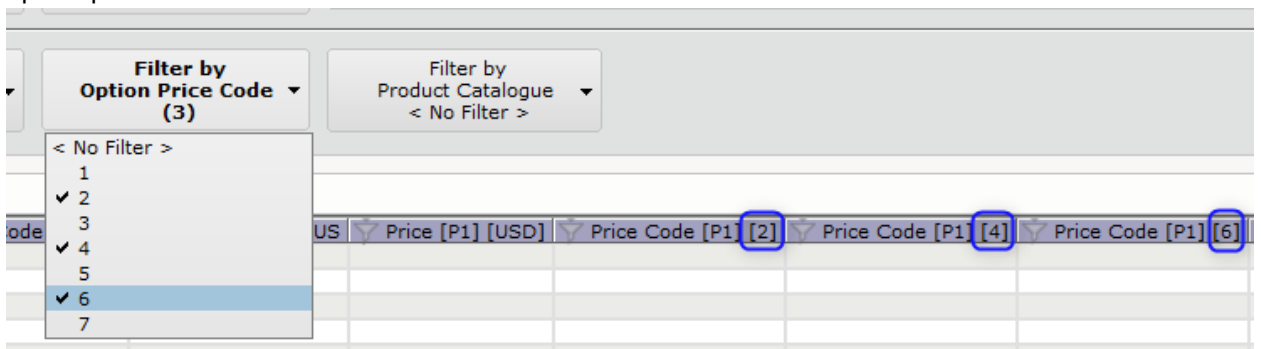
- Changed flagged unvalidated project file from error to warning.
- Fixed problem with the Save Portfolio dialog not showing up along with the Catalogue Creator dialog.



- Fixed problem with categories in the Products card not being sorted alphanumerically.

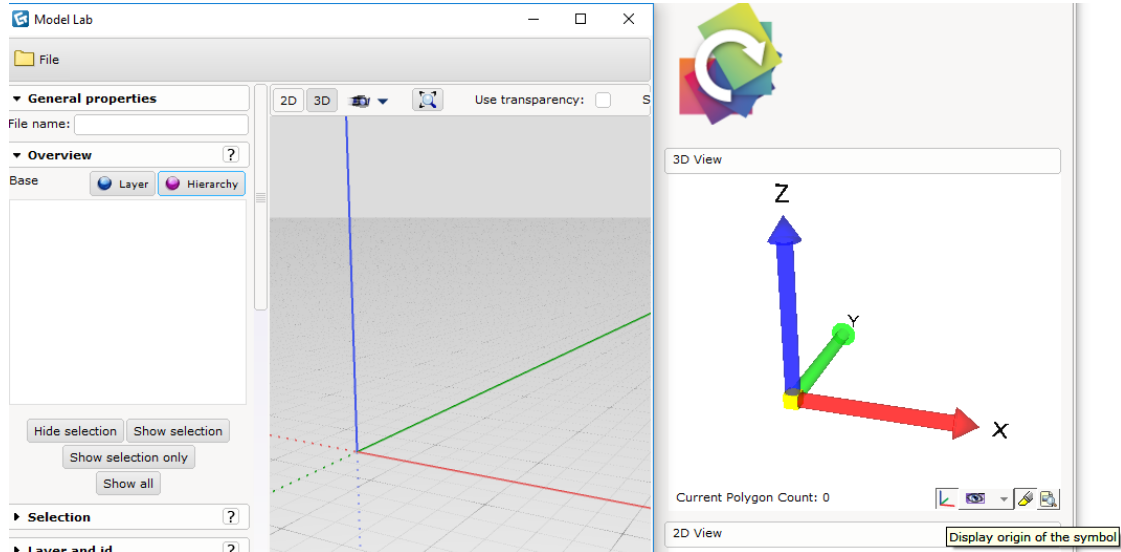


- Fixed problem with copying and pasting of product code and connectors at the end of the spreadsheet in the Products card, which would cause an incorrect refresh.
- Fixed problem with the Paste command not working in the **Tag Placement** in the Product card.
- Fixed pasting issue in the **Leadtime Programs** column in the Product card which would paste features instead of leadtime.
- Fixed resizing issue with the **Show/Hide picklist editor** tool in the Catalogue Explorer.
- Fixed problem with the Picklist Editor not automatically showing in the Catalogue Explorer when a picklist had been created prior to opening the dialog.
- Fixed problem with the option price code column sequence not following the sequence in the option price code filter.

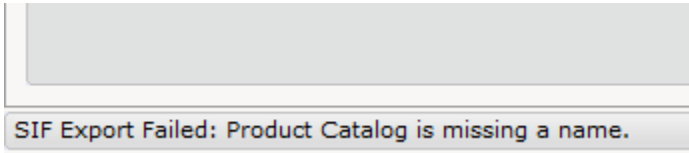


- Fixed issue with the option price code filter not working when the option price code was stored in a nested feature.

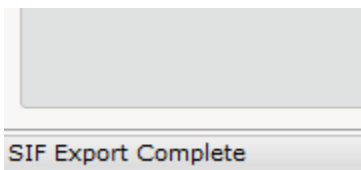
- Fixed issue with the check boxes in the **Project merge** in Data Import card not immediately getting updated when clicked.
- Fixed issue with the Navigator flickering nonstop when opened while loading/switching to a new project file.
- Fixed the color discrepancy of the origin display between Catalogue Creator and Model Lab.



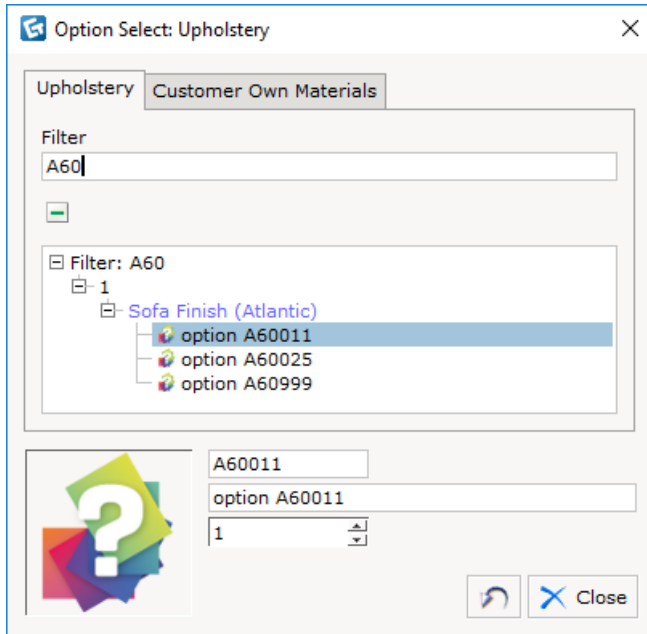
- Fixed problem with default option not set when switch from one child product to the other.
- Fixed problem with group code not being sorted by order.
- Fixed problem with failing SIF export not being properly notified to user.



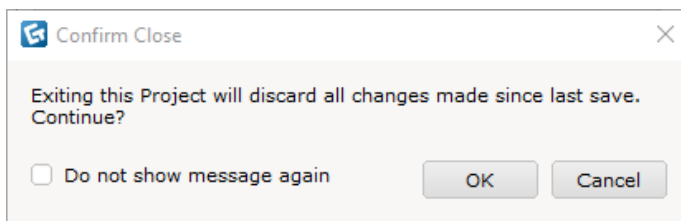
A fail notification is now prompted at the status bar.



- Fixed problem with not downloading the correct project file after a change in project file name until after restart.
- Fixed problem with the search in the project merge filter that would occur when resource directory paths contained the searched keyword.
- Fixed problem with renamed connectors not being remembered in the connector filter found in Geometry card.
- Fixed problem with the COM dialog not being searchable with option code and option description.

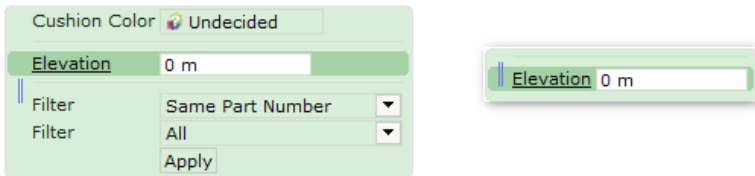


- Fixed problem where options in the COM dialog could not be deselected.
- Fixed problem with null 2D graphics when the usage type of external references was changed to '3D View'; it should show the preview image or unknown image if preview image is not available.
- Fixed problem with applied materials not being properly updated in the 2D/3D View in the Geometry card for cmSym models.
- Fixed problem with the **Catalogue Language Override** option in the Control Panel not updating the available language options in the property box.
- Fixed problem with all catalogue tree views automatically being selected in the Catalogue Explorer's **All Catalogues** when clicking on just one catalogue.
- Fixed problem with not able to change all pricelist at one go if the part number column was hidden in the Calculation dialog.
- Fixed problem with the unit conversion not being immediately updated in the Catalogue Creator when converting from feet to inches.
- Fixed problem with clicking the X in the Confirm Close dialog. It previously worked as 'Cancel' but now works as 'OK' instead.

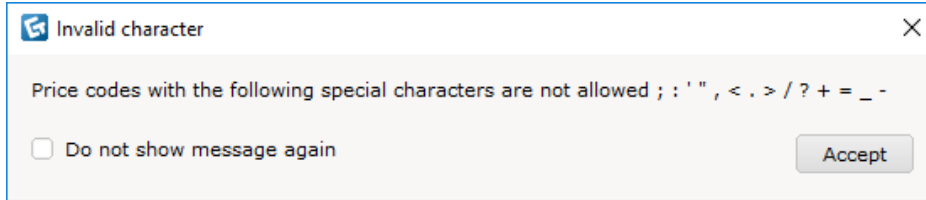


- Fixed project merge bug that disregard price, individual tag and group code changes.
- Fixed the problem with not able to deselect optional select in Geometry card's product view by clicking on a feature.
- Fixed SIF dimension not imported to Catalogue Creator.

- Fixed cannot deselect catalogue symbols with ctrl + left mouse click in 2D View when multiple catalogue symbols were selected.
- Hid filters from showing up in the property box if the catalogue symbol has no options.



- Disallowed usage of special characters as option price code.



- Fixed DsPData propChanged destroys cmSym created from the owner of the DsPData.
- Appended new file cache for every new DsCatFile id received from server to fix issue with file not downloaded when it was uploaded multiple times.

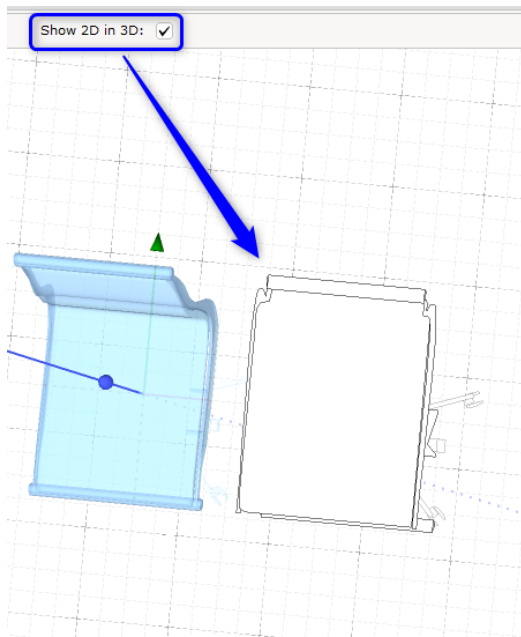
Crash fixes

- Fixed background dataSymbol wait download task crash.
- Fixed crash when searching in the Catalogue Browser.

Model Lab

New Features

- Added an option to **Show 2D in 3D** in Model Lab:



Model Lab Bug Fixes

- Fixed problem with the CAD file import for models which had different parts in the same layer, that could cause Model Lab to combine all the parts into one.
- Fixed issue that could cause a crash when converting .dwg to .cm3d/.cmSym using the Batch Converter.
- Fixed issue that could cause a crash when loading a .cmSym model which was converted from a SketchUp file.