

# Catalogue Tools 8.5 • Release Notes

November 20, 2017

## New Creator Features

### New Publish Tab

Project | Product Catalogues | Products | Features | Materials | Geometry | Validation | Data Import | Utilities | Publish

Portfolios (Demo 101 child) - Testing [807] X

Save Portfolio Last Modified: 2017-11-10 01:50:22

**Portfolio Details**

Name: (Demo 101 child)  
Description: Testing  
Publish: Members Only  
Project Type: Graphical Products  
Portfolio Parent: Catalogue Conference - Conference Material [1411]  
Embedded in Extension:  
Earliest Visible CET Version: 7.9.100  
Last Visible CET Version: XX.XX.XX

New user(s) e-mail:  
Administrator  
Refresh / Reset  
Member  
Delete member

**Files**

Local  
Select Project: configuraHumans.db3  
Upload Project File

Upload	Target	File Name	File Status	File Type
1	807	Swatches\steel.gm	Unknown	Material
2	807	Symbols\shakinghands1.cm3d	Unknown	Symbol
3	807	Symbols\blindman.cm3d	Unknown	Symbol
4	807	Symbols\0600-Office-Man.cm3D	Unknown	Symbol
5	807	Previews\1000-ForkliftDriver_cream.png	Unknown	Preview
6	807	Symbols\man3.cm3d	Unknown	Symbol
7	807	Symbols\0900-office-woman.cm3D	Unknown	Symbol
8	807	Previews\0910-Office-Woman_grey.png	Unknown	Preview
9	807	Symbols\0710-office-man_48.cm3D	Unknown	Symbol
10	807	Previews\0910-Office-Woman_red.png	Unknown	Preview

Refresh / Reset  
Check all  
Uncheck all  
Invert Selection  
Compare server/local timestamps  
Upload Selected Files

Server  
Download Location: c:\Users\hanly\Documents\CET Documents\

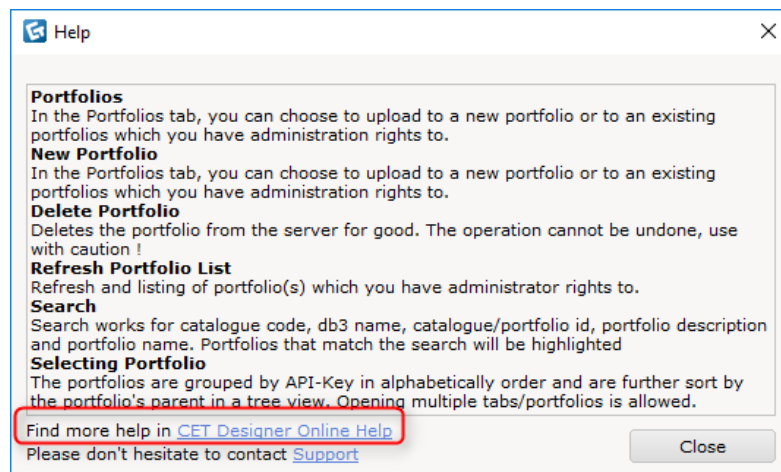
Download	File Name	Cid	File Type	Last Modified
1	Previews\Wapkin.png	807	png	6/5/2017 5
2	Symbols\Food\Pumpkin.cm3d	807	cm3d	6/5/2017 5
3	Previews\KnivesWallRack.png	807	png	6/5/2017 5
4	Symbols\Food\RedAppleV2.cm3d	807	cm3d	6/5/2017 5
5	Previews\Jar2.png	807	png	6/5/2017 5
6	Symbols\Food\Sardine.cm3d	807	cm3d	6/5/2017 5
7	Previews\Pax.png	807	png	1/20/2017 1
8	Symbols\Food\StdKitchenPineappleTin2witl	807	cm3d	6/5/2017 5
9	Previews\PaxH05.png	807	png	1/20/2017 1
10	Symbols\Food\WoodenCrateWithVege.cm3	807	cm3d	6/5/2017 5
11	Previews\MushroomTin.png	807	png	6/5/2017 5
12	Symbols\Food\banana.cm3d	807	cm3d	6/5/2017 5

Refresh / Reset  
Check all  
Uncheck all  
Invert Selection  
Delete Selected Files  
Download Selected Files

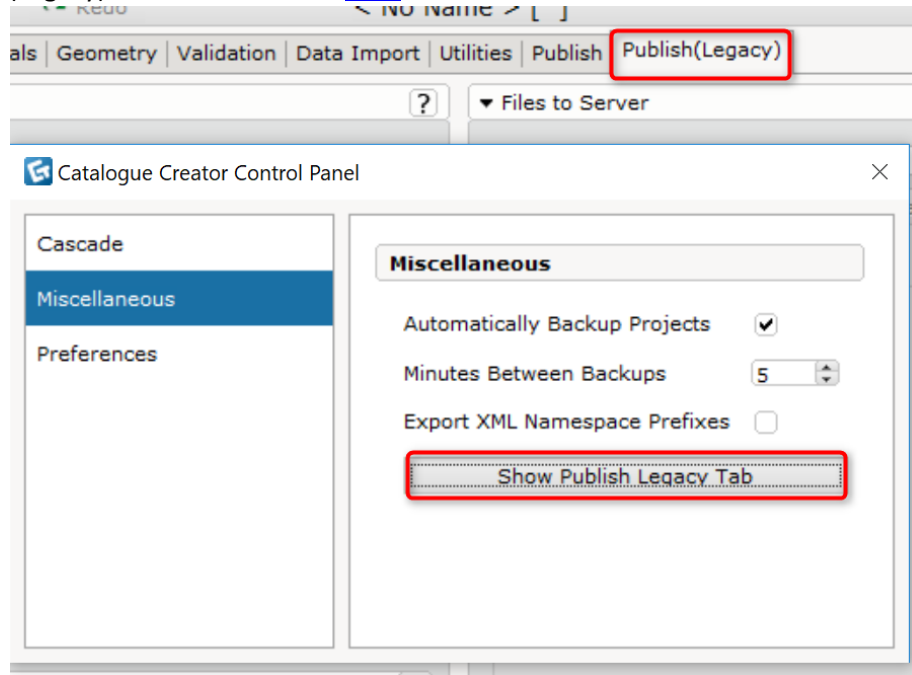
**Transfers**

Name	Message	Status	Progress
------	---------	--------	----------

- A detailed manual of the Publish tab is available [here](#), also accessible from the tab's online help button.



- The previous Publish tab is still accessible from the Catalogue Creator Control Panel -> Miscellaneous -> Show Publish (Legacy) tab.
- The Publish (Legacy) tab will only stay open if the Catalogue Creator window is opened.
- A Publish (Legacy) manual is available [here](#).



#### Updated Support Page Manual

- The manual is accessible from the Catalogue Creator's Help menu, or from the CET Support page :
  - [Catalogue Creator](#)
  - [Catalogue Browser](#)

#### Loading Old Drawings

- New optimized code when loading old drawings.

#### Introducing Product Parent Column in Products Card

- We are introducing a new way of creating root product – child products.
- Simply create features that bring the root product to its child products using the Functional Sku number, then add the root product's code in the **Product Parent** column.

**Products**

	Code	Description [en-US]	Features	Product Parent
1	p123	(ROOT) Table	Width;Leg type	p123
2	p123.10.1	Red table 1000 x 800 mm	Material_A	p123
3	p123.10.2	Green table 1000 x 800 mm	Material_A	p123
4	p123.10.3	Blue table 1000 x 800 mm	Material_A	p123
5	p123.10.4	Yellow table 1000 x 800 mm	Material_A	p123
6	p123.12.1	Pink table 1200 x 800 mm	Material_B	p123
7	p123.12.2	Sky blue table 1200 x 800 mm	Material_B	p123
8	p123.12.3	Lime table 1200 x 800 mm	Material_B	p123

**Features**

	Code	Description [en-US]	Functional Sel.	SKU Sel.
1	Leg type	Leg type	<input checked="" type="checkbox"/>	<input checked="" type="checkbox"/>
2	Material_A	Material	<input type="checkbox"/>	<input type="checkbox"/>
3	Material_B	Material	<input type="checkbox"/>	<input type="checkbox"/>
4	Width	Width	<input checked="" type="checkbox"/>	<input checked="" type="checkbox"/>

**Table of Contents**

Expand All Close All + Add

- test-1
  - Table
    - P p123 - (ROOT) Table
      - 1000 mm
        - P p123.10.1 - Red table 1000 x 800 mm
        - P p123.10.2 - Green table 1000 x 800 mm
        - P p123.10.3 - Blue table 1000 x 800 mm
        - P p123.10.4 - Yellow table 1000 x 800 mm
      - 1200 mm
        - P p123.12.1 - Pink table 1200 x 800 mm
        - P p123.12.2 - Sky blue table 1200 x 800 mm
        - P p123.12.3 - Lime table 1200 x 800 mm

**Options**

Width 1000 mm  
Leg type Blue  
Material Red

Arrange  
Elevation 0 m

Propagate  
Filter Same Part Number  
Filter All

Apply

**Options**

Material Red

Arrange  
Elevation 0 m

Propagate  
Filter Same Part Number  
Filter All

Apply

**Diagram:** A tree diagram showing the hierarchy of products. The root node is 'Table' (1000 mm). It has four child nodes: 'Red table 1000 x 800 mm', 'Green table 1000 x 800 mm', 'Blue table 1000 x 800 mm', and 'Yellow table 1000 x 800 mm'. The 'Table' node is labeled 'root product'. The child nodes are labeled 'child products'.

*Example of how a manufacturer can utilize product parent .*

### Introducing a Sync Button in Product Catalogue Card

- Select the product you wish to synchronize its description to that of the Product card's, then click on the Synchronize button to match them.
- The synchronized description will also update the description in the Table of Content in Catalogue Explorer (accessed from the Catalogue Browser) and the Navigator.

**Navigator**

Level: P Products Show: Select... Expand All Hide All

Enter Text To Filter List

Filter First Level

P P1 - Product 1  
P P2 - Testing testing

**Table of Contents**

Expand All Close All + Add Level Show/Update Toolbox Preview

- Test-1
  - Products
    - P P1 - Product 1
    - P P2 - Product 2

**Catalogues**

Group Dekko test Test (v) Proc Steelcase

Part Number	Description
P1	Product 1
P2	Product 2

**All Products**

Filter by product  
☐ Code / P  
☐ Description  
☒ Both

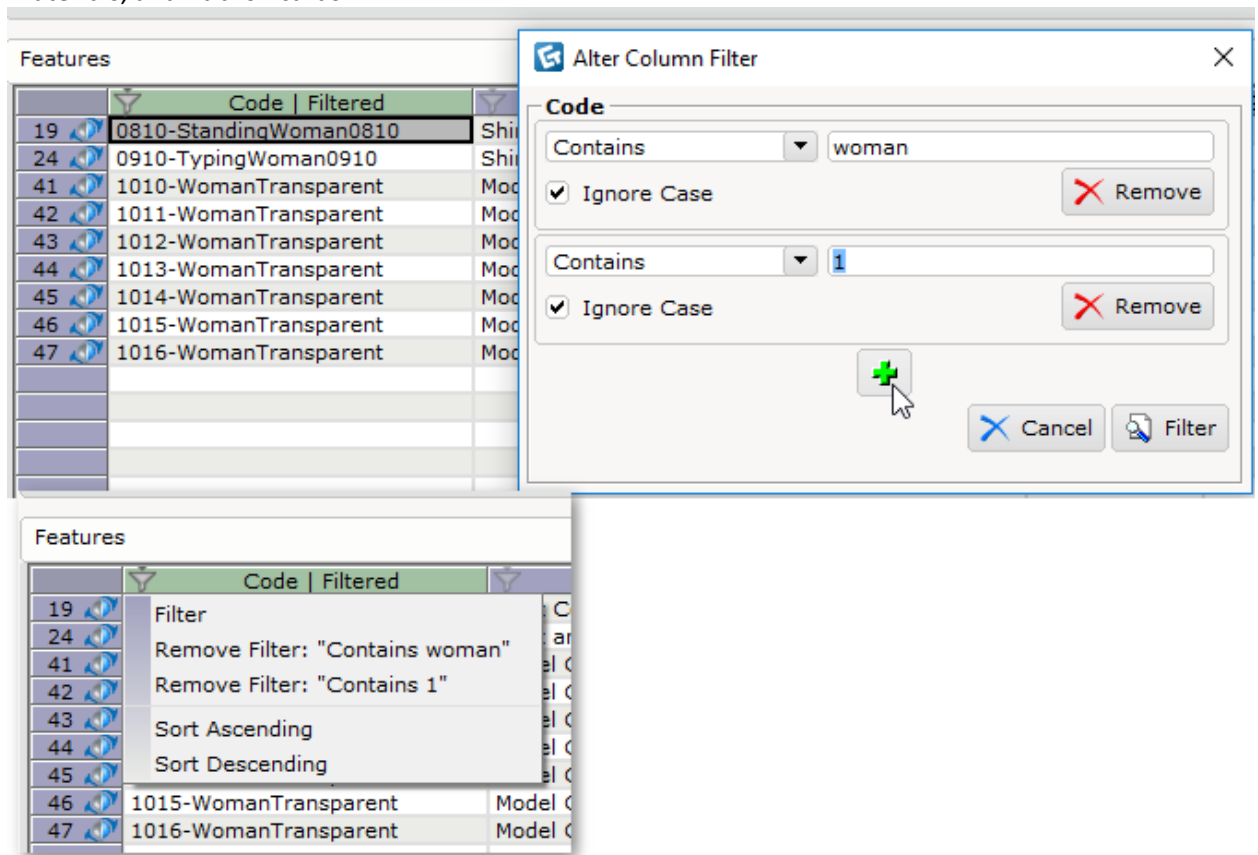
Must Contain  
Show For V

✓ P1 - Prodi  
✓ P2 - Testi

**Synchronize Button:** A green button with a circular arrow icon, located at the bottom right of the Catalogue Explorer window.

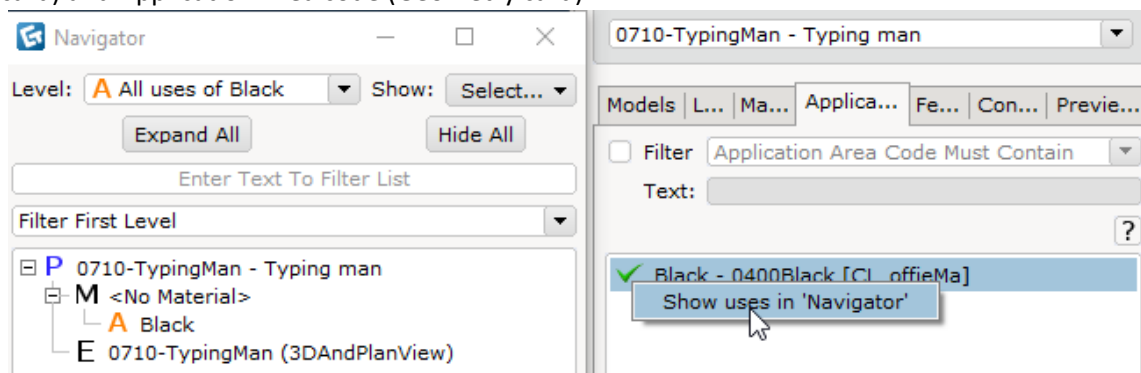
## Support For Multiple Filters in a Filter Dialog

- The multiple filters functionality is available in all spreadsheet headers in the Products, Features, Materials, and Publish cards.



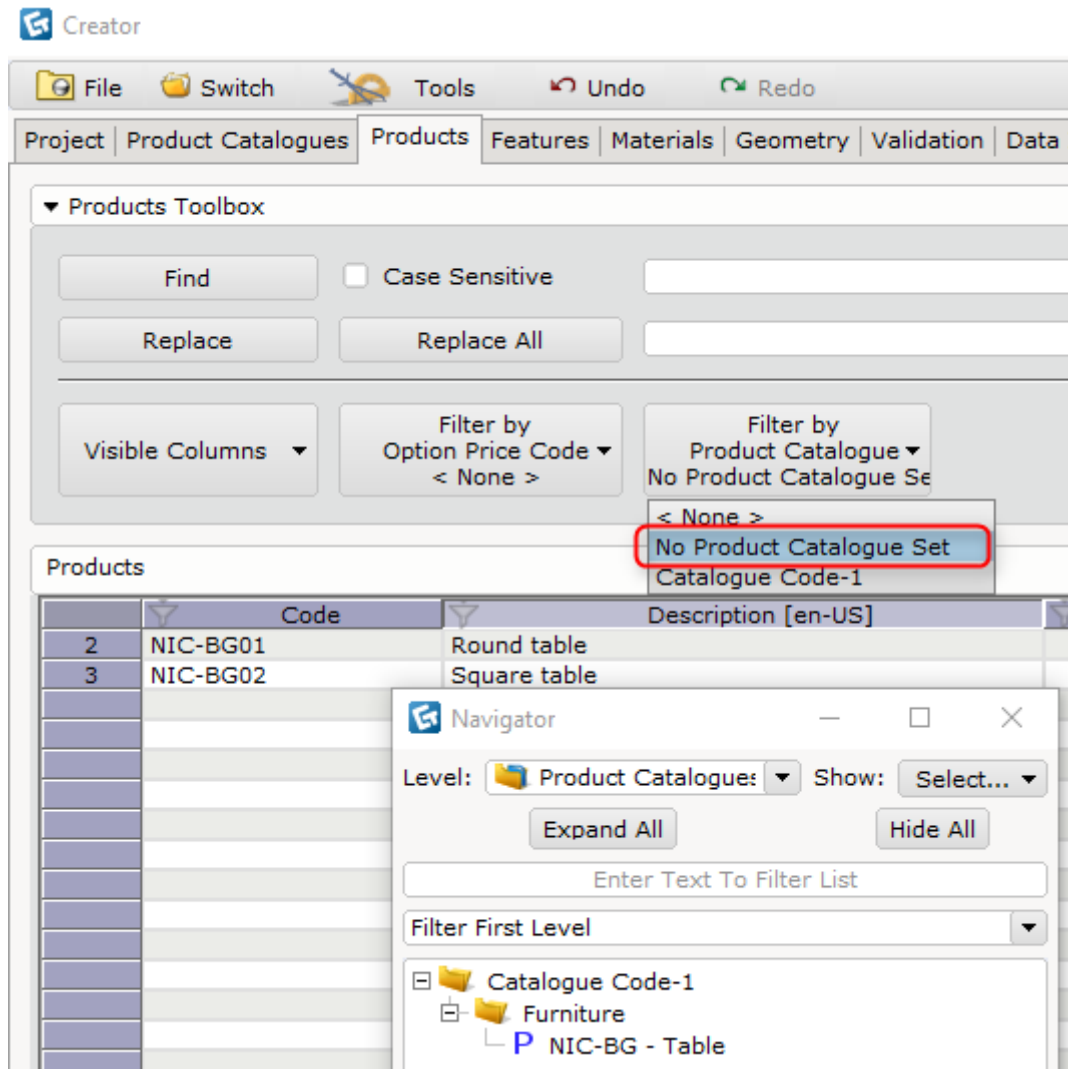
## Added Shortcut to Show Usage in Navigator

- Applicable to Features code (Features & Geometry card), Material code (Material & Geometry card) and Application Area code (Geometry card).



### Added “No Product Catalogue Set” Filter for Unreferenced Products in any Product Catalogue

- Products (including child products) that are not used in any of the project’s product catalogues will be filtered out.

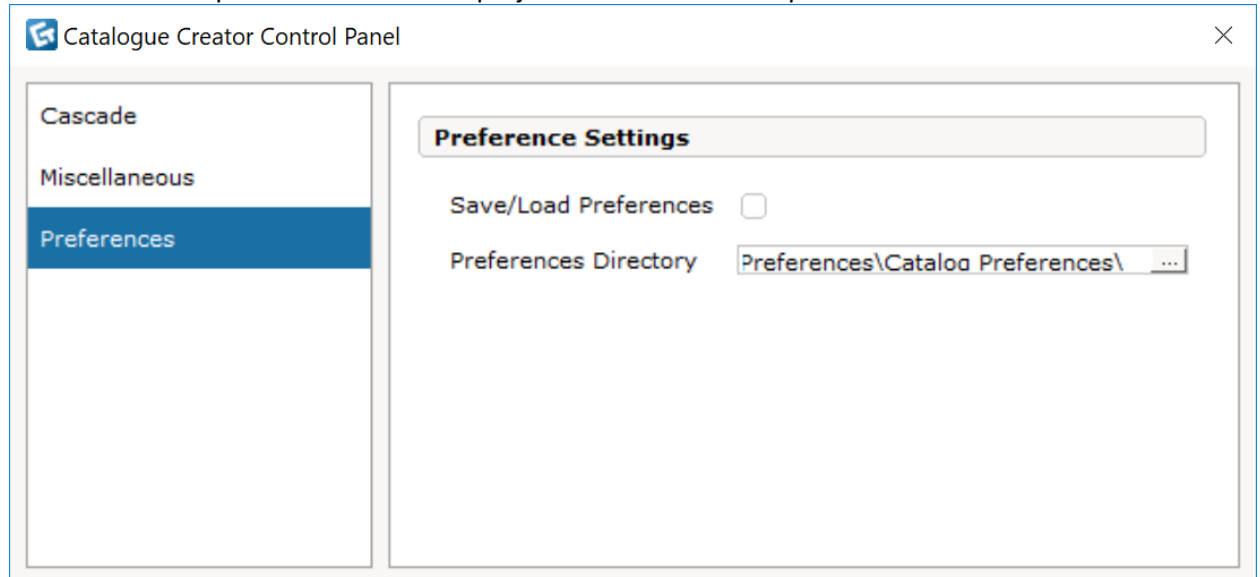


*Sync button located at the bottom of the Product Catalogues card.*

### Preference Settings Added to the Catalogue Creator Control Panel

- User will be able to save the following setting for each project by saving the preference file (.cmpref):
  - Visible columns for all spreadsheets (Products, Features, Options, Materials)
  - Selected validations
  - Catalogue Creator Control Panel settings
- Simply check the **Save/Load Preferences** checkbox in the Control Panel and the .cmpref file will be saved along with the project file.
- The saved .cmpref file will have the same name as the project file.

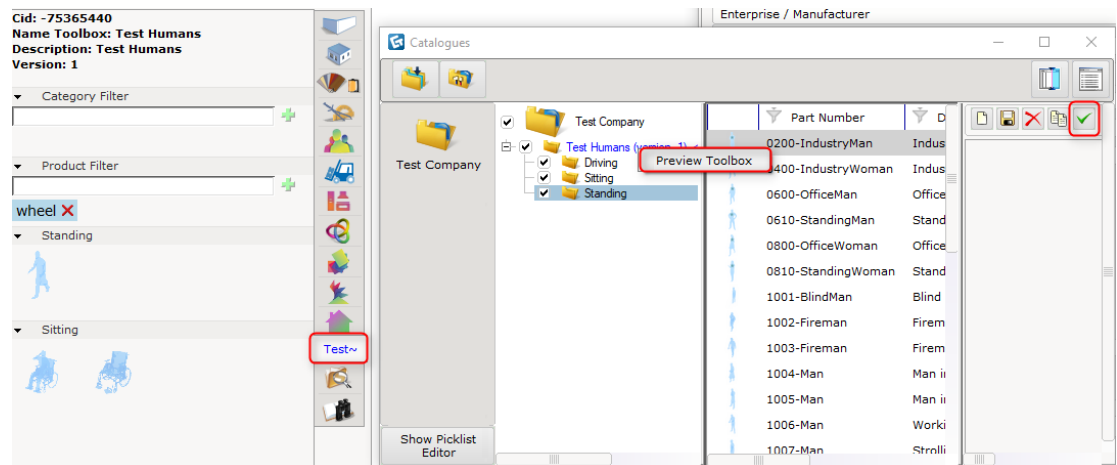
- Consider saving the .cmpref file in the same location by setting the same path in the **Preference Directory**. Load any project file and the Catalogue Creator will look for the correct .cmpref file based on the project name in the same path.



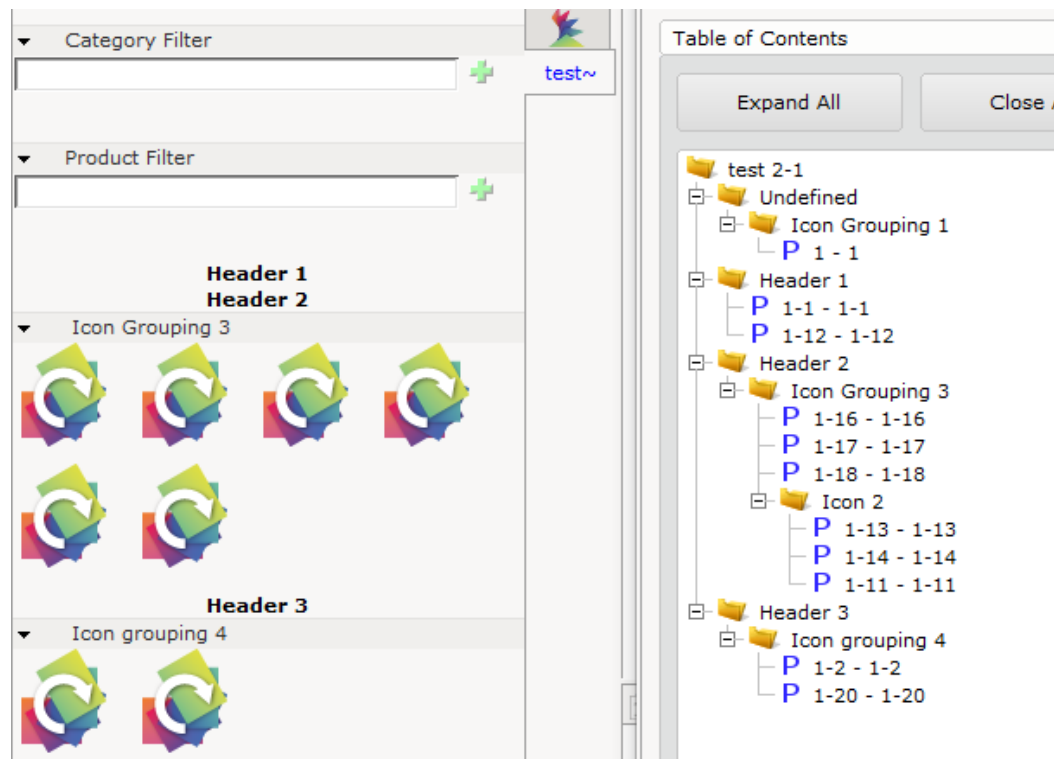
## New Browser Features

### Toolbox Preview in Catalogue Explorer Panel

- Only available in developer mode.
- A new feature has been implemented in the Catalogue Explorer to enable user to preview the toolbox without coding it.
- Right click to preview the toolbox in any downloaded/preview catalogues found in the Catalogue Explorer.
- The toolbox is for visual/testing purposes only and will be removed after exiting from CET Designer.
- The preview toolbox has 2 filters: group filter and product filter. Use the **OR** filters to refine your search.
- The preview toolbox is using a new libraryLimb, DsDataCatalogLimb which arrange products in 4x3 container formation. The remaining products will be scrollable in that container.
- Generating a preview toolbox works for preview catalogue (projects file loaded in the Catalogue Creator) as well, the toolbox will be shown in blue font.
- The toolbox will follow the UI level of the table of contents:
  - Undefined – will not be shown in the toolbox, will not show up in toolbox.
  - Header – will be shown as bold text, does not hold products.
  - Icon grouping – will be group in a container, holds products.
  - Icon – will be group in a container, holds products.
- Use the check button in **Library Builder Pane** in catalogue explorer to turn on/off the preview toolbox.



*Using OR filters to refine the search in a preview toolbox and check button to turn on/off preview toolbox.*



*Using the UI level in the new DsDataCatalogLimb.*

## New Developer Features

### Turn Catalogues Code On/Off

- Improved registration based on allowed version of CET Designer and cleanup of "old" catalogues that do not exist anymore.

#### New Library Limb - DsDataCatalogLimb

- New toolbox library limb, hybrid coding only.

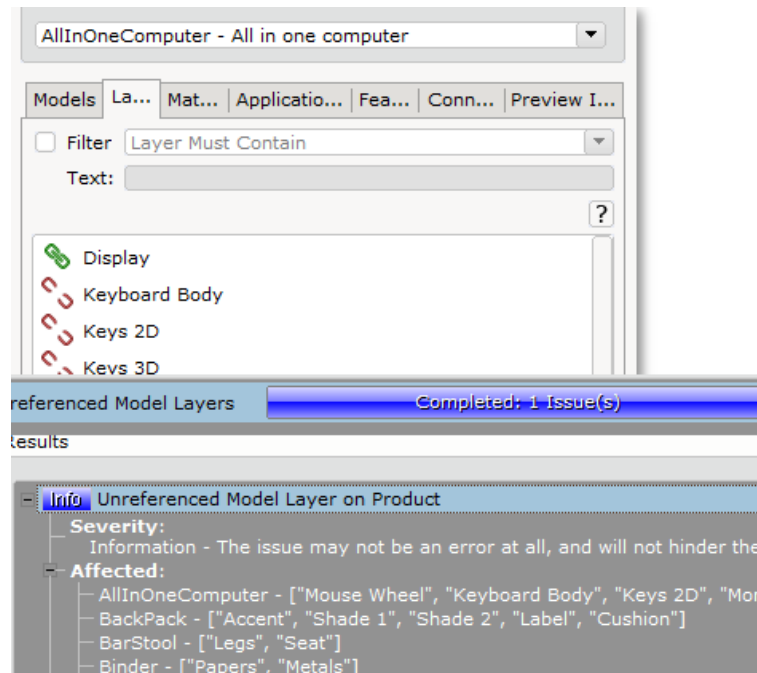
#### Added Flag in dsPData to Not Use Material Legend

- The method, useDsLegendMaterial, is turned on by default.
- While returning false on this flag will speed up the calculation price update, the finish summary in the Catalogue Browser will however return null/not work.

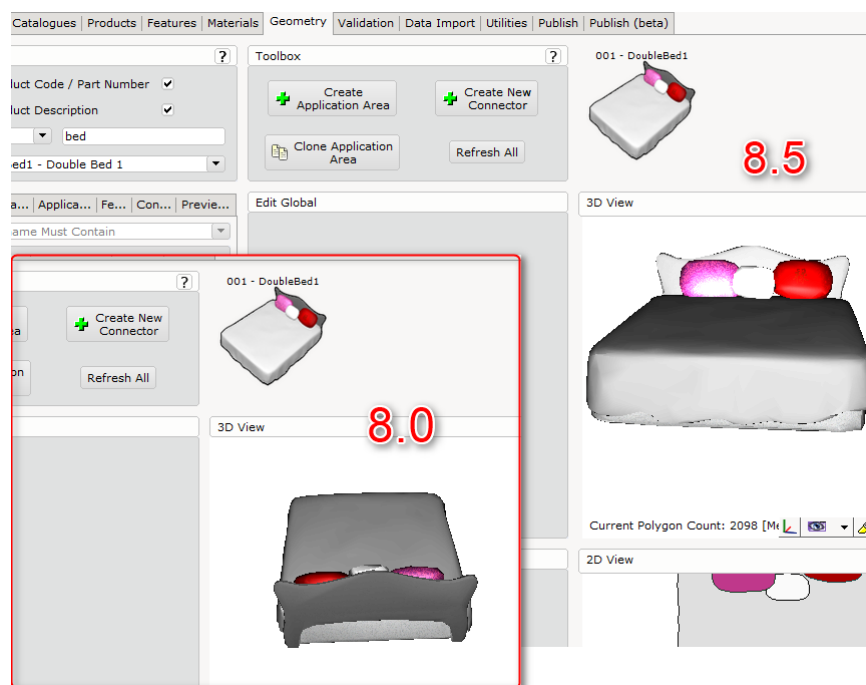


## Bug and Crash Fixes

- Fixed unreferenced model layers validation. The validation “Unreferenced Model Layers” now shows all unreferenced layers in the affected list.



- Fixed model preview always start from the back. The model preview will be consistent with the Model Lab view.



- Fixed validation “Feature Models”. Fixed locking state of validation progress bar.
- Fixed retaining Catalogue Creator window size. The Catalogue Creator window will stay the same size each time it is closed and opened, as long as CET Designer remains open.
- Fixed remembering visible columns setting. The visible columns setting for each card (Products, Features and Materials) will be remembered even after CET Designer does a clean restart.
- Fixed unchecking optional select option. Selecting and deselecting the option now works smoothly.

倚背	L
蓝色	✓ W
头枕	no label
脚轮	no label
腰托	no label

- Fixed accepting currency format in Catalogue Creator. Copying and pasting pricing from Excel with currency format now works fine. Copying and pasting numbers with comma now also works.

	A	B
1	p1	\$1,000.00
2	p2	\$1,120.00
3	p3	\$1,254.40
4	p4	\$1,404.93
5	p5	\$1,573.52
6	p6	\$1,762.34
7	p7	\$1,973.82
8	p8	\$2,210.68
9	p9	\$2,475.96

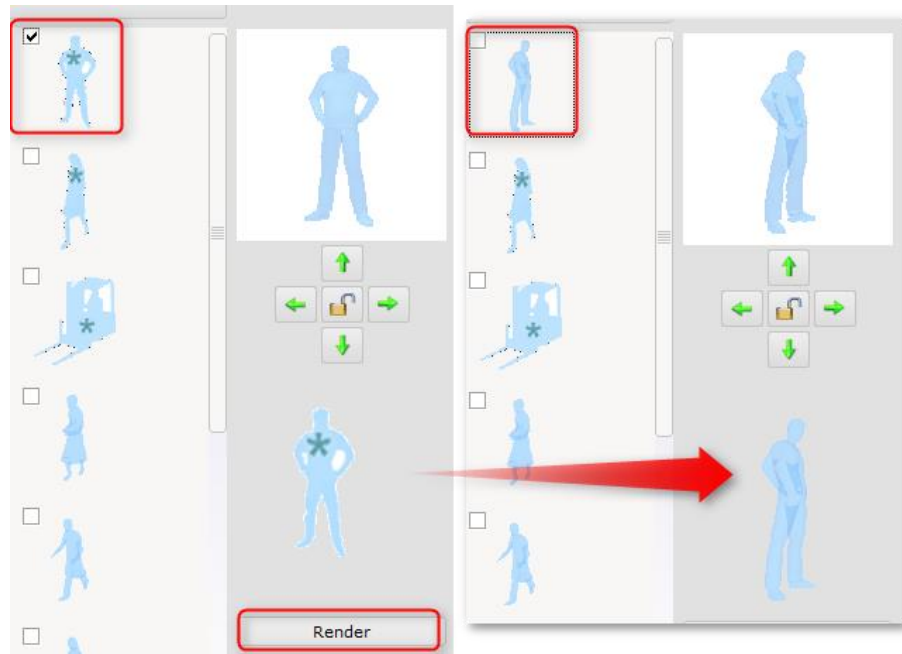
Products		
	Code	Price [P1] [M]
1	p1	RM1000.0000
2	p2	RM1120.0000
3	p3	RM1254.4000
4	p4	RM1404.9300
5	p5	RM1573.5200
6	p6	RM1762.3400
7	p7	RM1973.8200
8	p8	RM2210.6800
9	p9	RM2475.9600

- Fixed copying feature row during description sorting. Copying the feature row will work even if it is sorted by description.

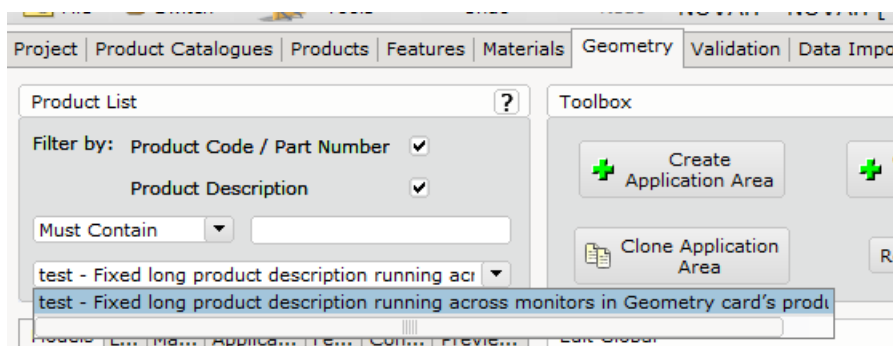
Features		
	Code	Description
57	0710-TypingHoaryMan0710	Filter
58	0810-StandingWoman0810	Sort Ascending
59	0610-StandingMan0610	Sort Descending
60	0600-OfficeMan0600	Puvun vari
61	1000-ForkliftDriver1000SuitCode	Puvun väri
62	0800-OfficeWoman0800	Univormun väri
63	0400-IndustryWoman0400	Univormutyyppi
64	0200-IndustryMan0200	Univormutyyppi
65	0200-IndustryMan0200-1	Univormutyyppi

- Fixed tagging areas not applying to catalogue objects in blocks. The quantity of the catalogue objects will not be affected by tagging and blocks in the Calculation dialog.

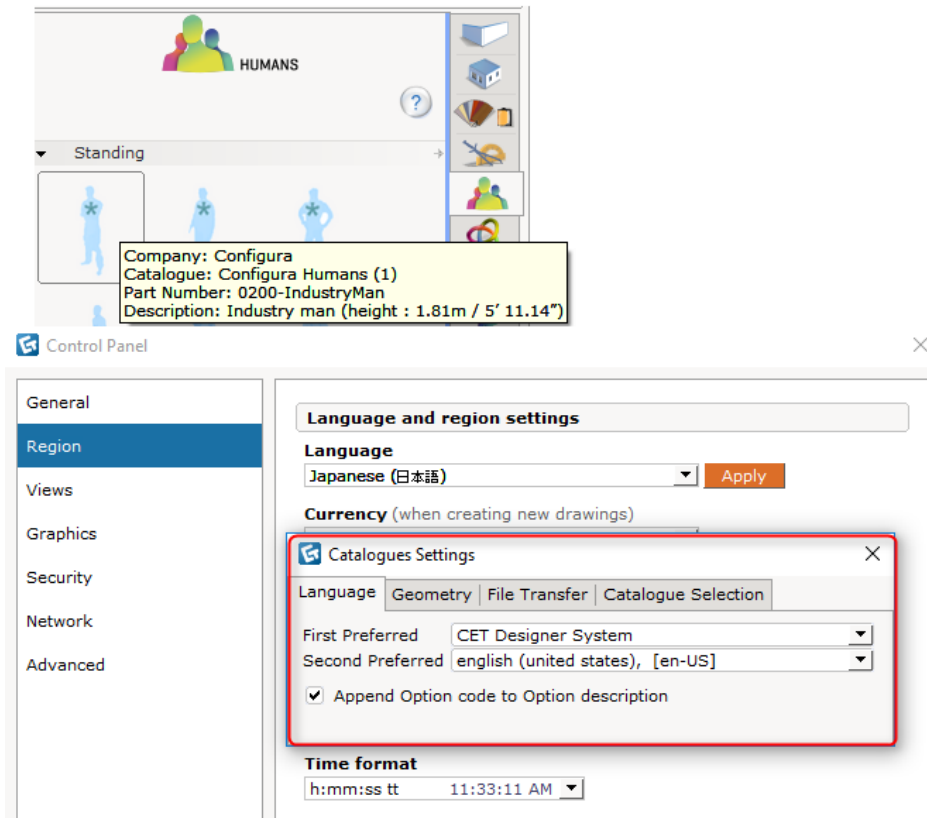
- Fixed the preview of current thumbnails. The preview space now shows the currently assigned model previews.



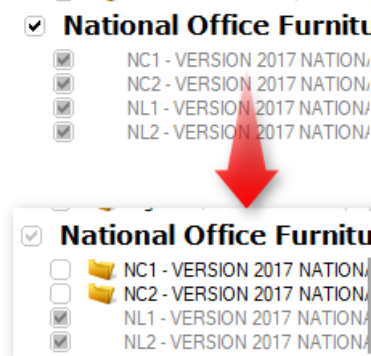
- Fixed <END> command does not work after switching out from option price code filter. Using <END> command now works with or without filter.
- Fixed CETDCUpload Task and httpSyncTask is running full speed the whole time. The sleep time for both tasks will now fluctuate (sleep longer if download, upload and synching are done), allowing other tasks to perform.
- Fixed long product description running across monitors in the Geometry card's product list. The long description is now confined in a limited bound.



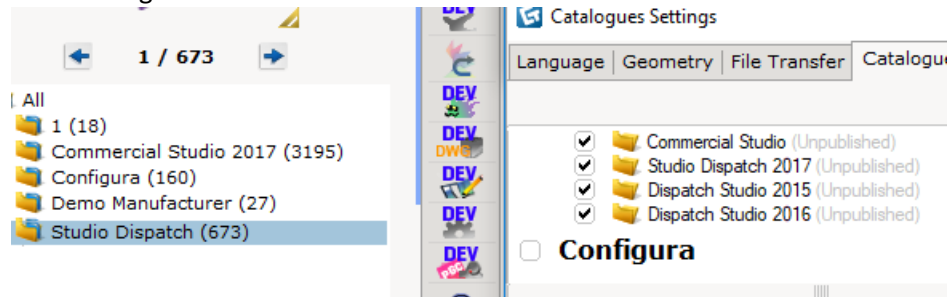
- Fixed catalogue language if the language set in the Control Panel is not available.
  - Set English (en-US) as the default second preferred language in the Catalogue Settings dialog.
  - If a catalogue does not support the language set in the Control Panel but supports English (en-US), English will be used as the default display language in CET Designer.



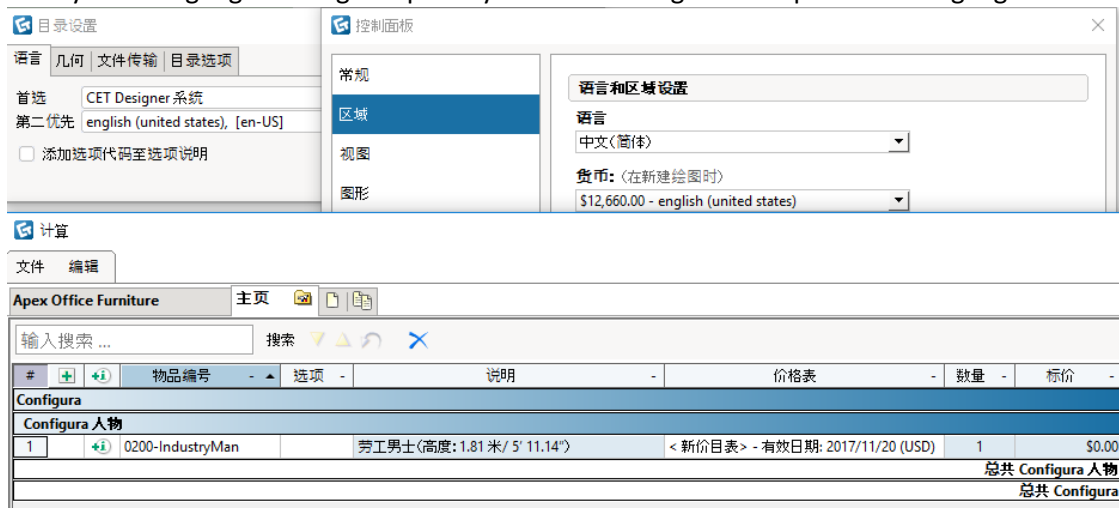
- Fixed Catalogue Selection registration. Registered catalogues are now correctly synchronized to MyConfigura and shown in the Catalogue Selection dialog.



- Fixed Synchronizing to MyConfigura. Installed catalogues are automatically synchronized and shown in the Catalogue Browser.



- Fixed system language is not given priority if set as catalogue's first preferred language.



- Fixed uploading project file from external network.

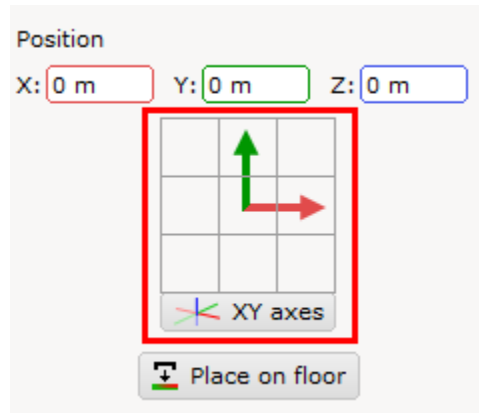
## Model Lab 8.5 • Release Notes

November 20, 2017

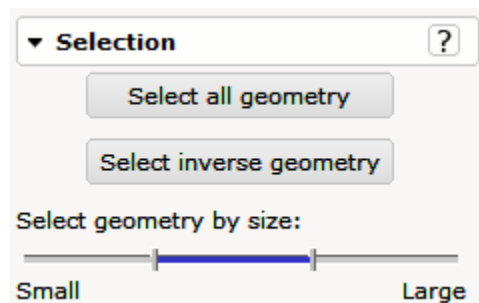
### News & Changes

- When using the tool to remove invisible triangles, it will only affect your currently selected LOD.
- A model repositioning tool has been added. This tool allows you to move the model while having movement in one axis locked.

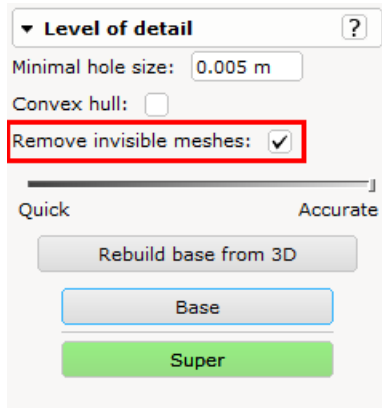
The z-axis is the default locked axis.



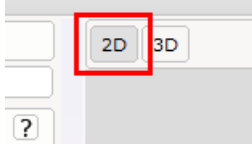
- Improved model export for Model Lab, ensuring there are normals and uv-coordinates.
- A new selection tool lets you do selection based on geometry size; drag the two sliders to set your selection interval.



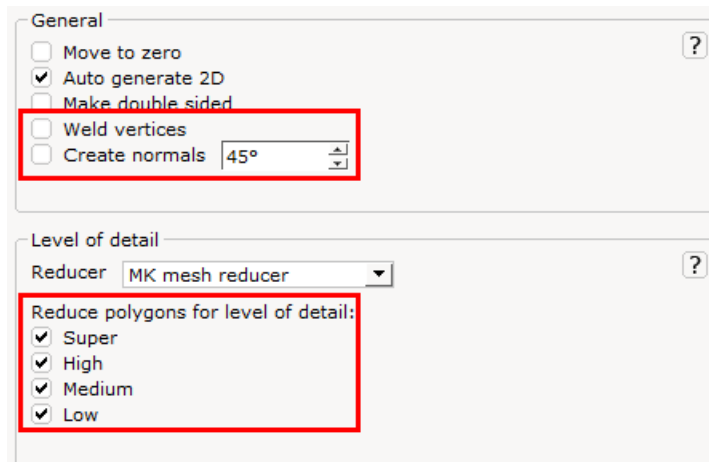
- You can now remove 2D that is not visible in order to improve performance in the 2D view.



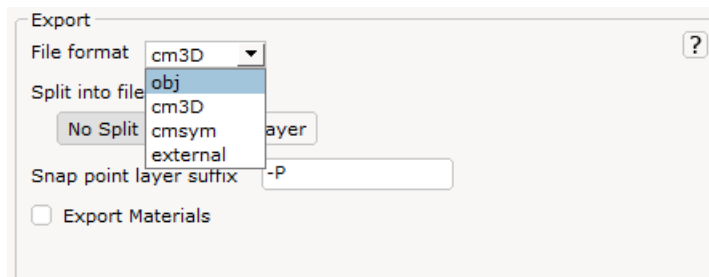
Note: this tool is only visible if you are in the 2D view.



- The Batch converter now offers new tools for Vertice Welding and normal Creation. Level of Detail reduction also now offers more detailed controls over which LOD levels to reduce.



- Batch converter export now supports .obj export, in addition to the old formats



## Solved Issues

- Added extra checks to ensure that Normals and UV-coordinates are included when exporting from the Model Lab.
- Fixed problem with save of .cm3d files that could lead to missing normal and bounds.
- Much faster generation of quick-auto-normals for cases where normals have erroneously been omitted.
- Improved how .cm3d files are loaded; multiple lines are collapsed, giving better performance when working with models that have many lines.