

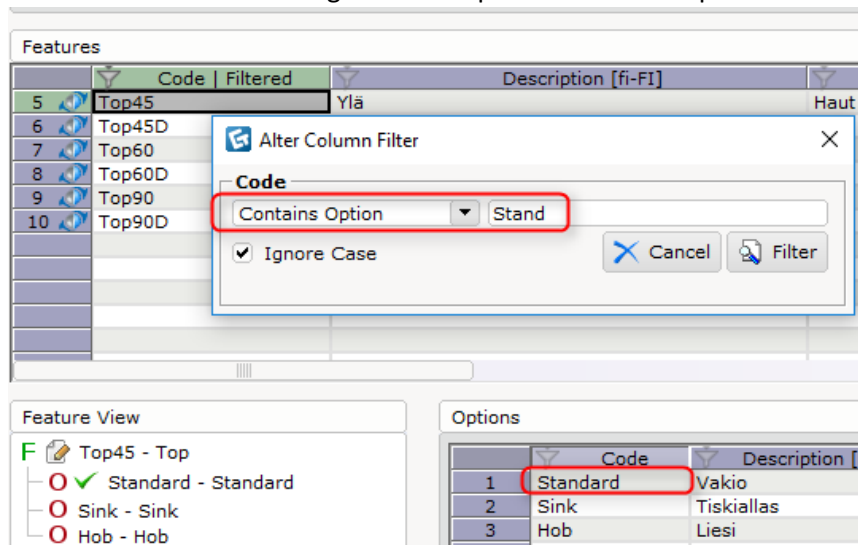
Catalogue Creator 8.0 October Patch • Release Notes

October 27, 2017

New Features

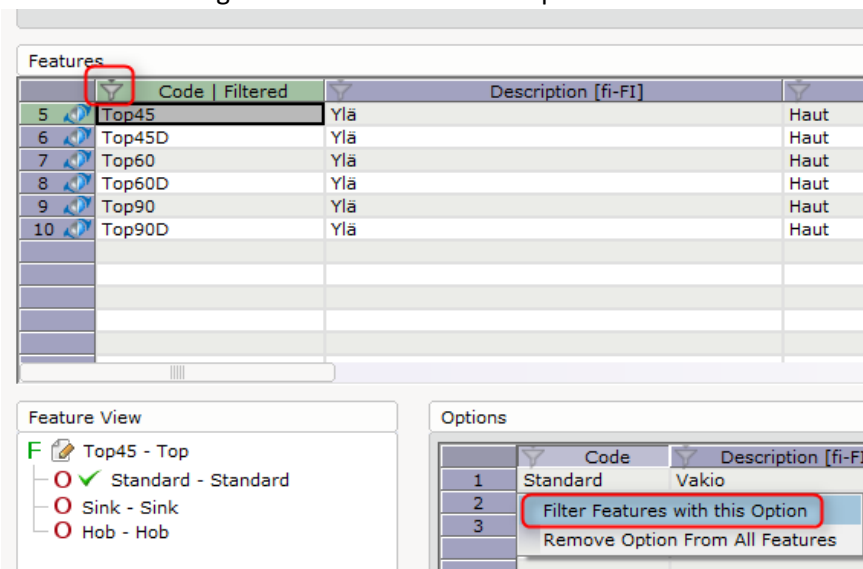
Added ability to filter feature by its option code

- Users can now filter features by their option code by right clicking on the Code header in the Features spreadsheet and then selecting Contains Option from the dropdown menu:



Filter features by option code through feature header.

- Users can also filter features by their option code by right clicking on the option cell the Options spreadsheet and then selecting Filter Features with the Option from the menu:



Filter features by option code through option code's cell.

Supporting negative upcharge

- Placing a negative value as option price code or upcharge price in the Options spreadsheet will result in a negative upcharge in the Calculation dialog.
- A negative upcharge will be shown in brackets in the Calculation dialog.

| Products | | | |
|----------|---------|-----------------------------------|------------------------|
| | Code | Description [en-US] | Price [Standard] [USD] |
| 6 | CC-01N | Vertebra Chair-Nylon Base | \$400.0000 |
| 7 | CC-01NA | Vertebra Chair-Nylon Base-Armrest | \$425.0000 |

| Options | | | |
|---------|-------|---------------------|------------------------|
| | Code | Description [en-US] | Price [Standard] [USD] |
| 1 | Nylon | Nylon | \$-10.0000 |

| # | Part Number | Options | Description | Quantity | Upcharge | List | Sell % | Ext. Sell |
|--------------------------|-------------|---------------|---------------------------|----------|-----------|----------|--------|-----------|
| Demo Manufacturer | | | | | | | | 0 % |
| Demo Seating | | | | | | | | 0 % |
| 1 | CC-01N | | Vertebra Chair-Nylon Base | 1 | | \$390.00 | 0 % | \$390.00 |
| | | CC Body | Body | | \$0.00 | | | |
| | | Nylon | Nylon | | (\$10.00) | | | |
| | | White | White | | \$0.00 | | | |
| | | CC Chair Base | Chair Base | | \$0.00 | | | |

Setting negative upcharge through option price.

Visible Columns ▾

Filter by Option Price Code Upcharge

Filter by Product Catalogue ▾

< None >

Upcharge

Products

| | Code | Description [en-US] | Price [Standard] [USD] | Price Code [Standard] [Upcharge] |
|---|---------|------------------------------------|------------------------|----------------------------------|
| 1 | CC-01 | Vertebra Chair | | |
| 2 | CC-01C | Vertebra Chair-Chrome Base | \$500.0000 | \$-50.0000 |
| 3 | CC-01CA | Vertebra Chair-Chrome Base-Armrest | \$525.0000 | |

Feature View

F

CC Chair Base - Chair Base

C - Chrome

N - Nylon

Options

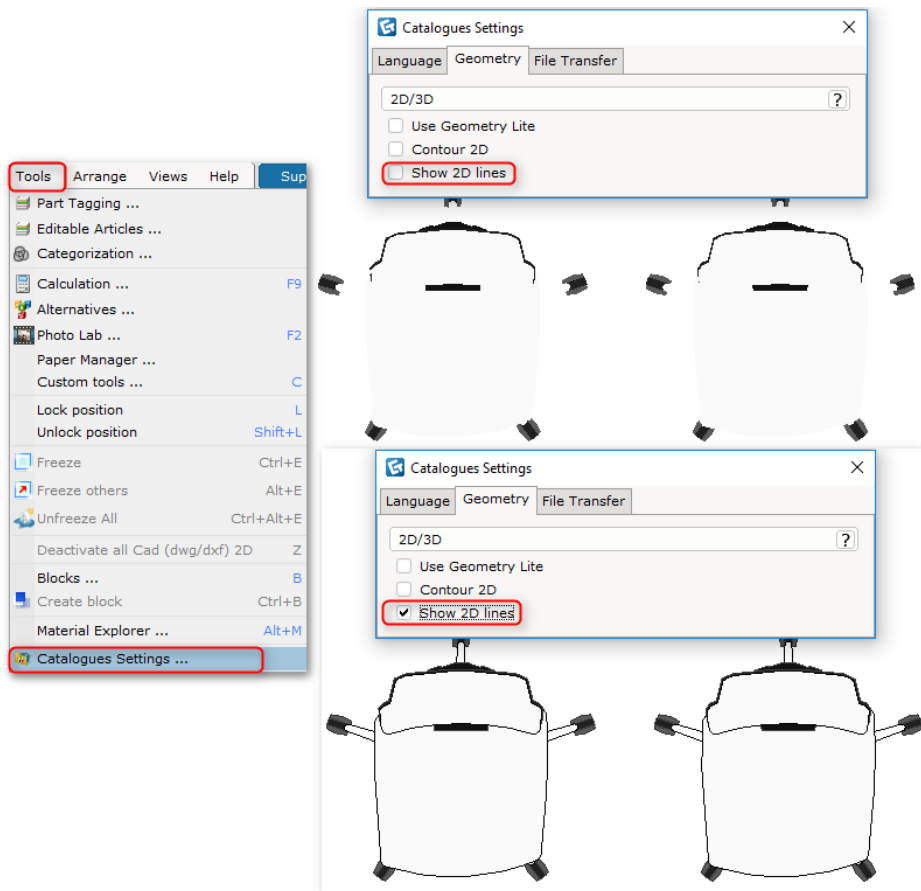
| | Code | Description [en-US] | Price [Standard] [USD] | Price Codes [Standard] [Upcharge] |
|---|------|---------------------|------------------------|-----------------------------------|
| 1 | C | Chrome | | |
| 2 | N | Nylon | | |

| # | Part Number | Options | Description | Quantity | Upcharge | List | Sell % | Ext. Sell |
|-------------------|-------------|---------------|----------------------------|----------|-----------|----------|--------|-----------|
| Demo Manufacturer | | | | | | | 0 % | |
| Demo Seating | | | | | | | 0 % | |
| 1 | CC-01C | | Vertebra Chair-Chrome Base | 1 | | \$450.00 | 0 % | \$450.00 |
| | | CC Body | Body | | \$0.00 | | | |
| | | Nylon | Nylon | | \$0.00 | | | |
| | | White | White | | \$0.00 | | | |
| | | CC Chair Base | Chair Base | | \$0.00 | | | |
| | | C | Chrome | | (\$50.00) | | | |
| | | CC Back Bone | Back Bone | | \$0.00 | | | |

Setting negative upcharge through option price code.

Turn on “Show 2D lines” by default

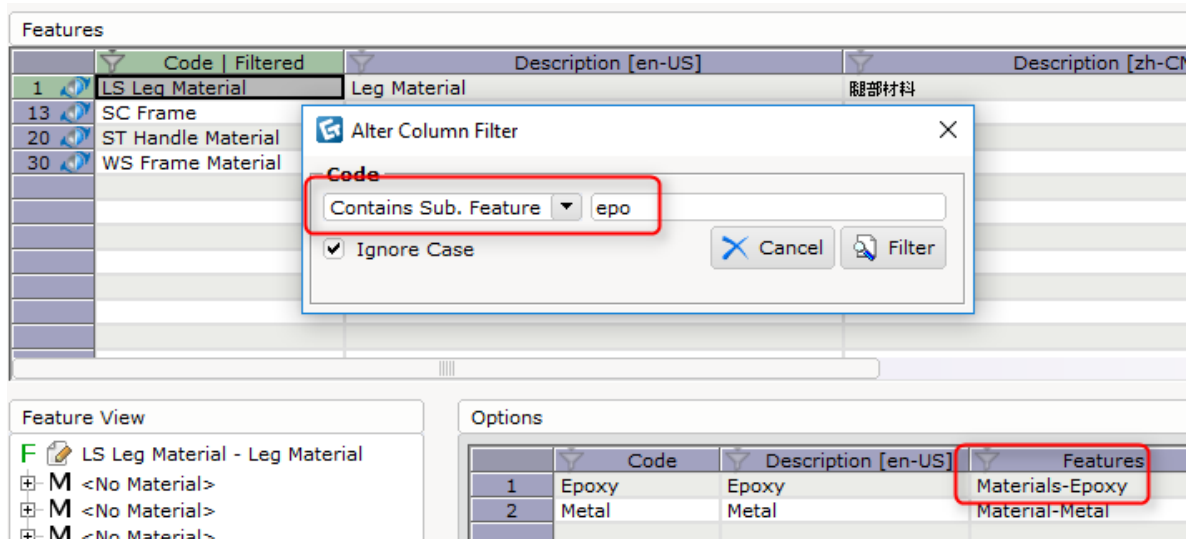
- The Catalogue settings, available in the Tools menu, will now show “Show 2D lines” enabled by default.
- This is especially useful for 2D symbols that have a white finish/surface.



Show 2D lines : off vs on.

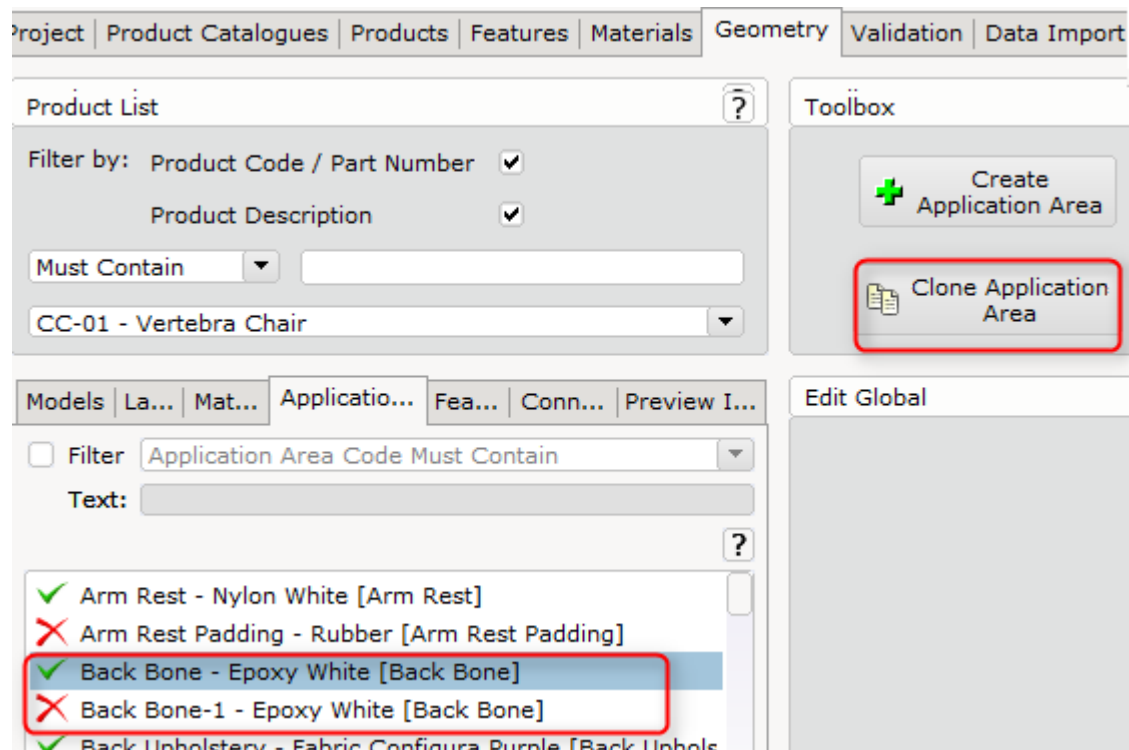
Added ability to filter feature by its sub-feature code

- Users can now filter features by its sub-feature code by right clicking on the Code header in the Features spreadsheet.



New "Clone Application Area" button

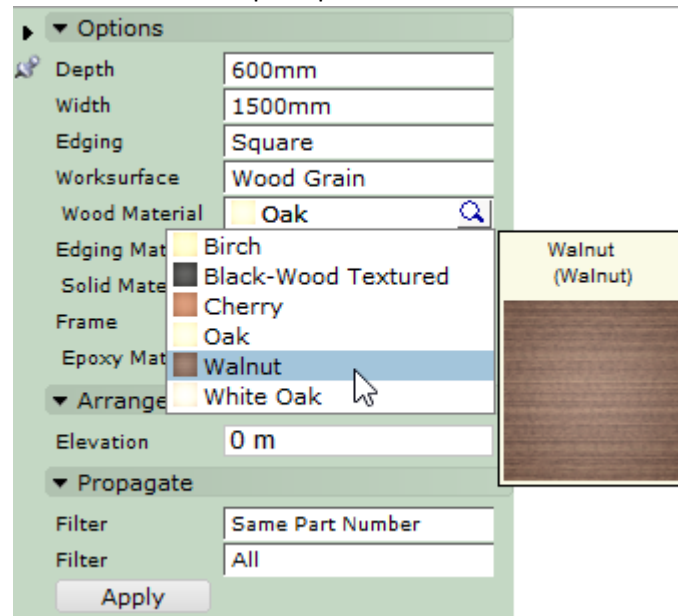
- Select any existing application area and click the button to clone it.



Bug/Crash fixing

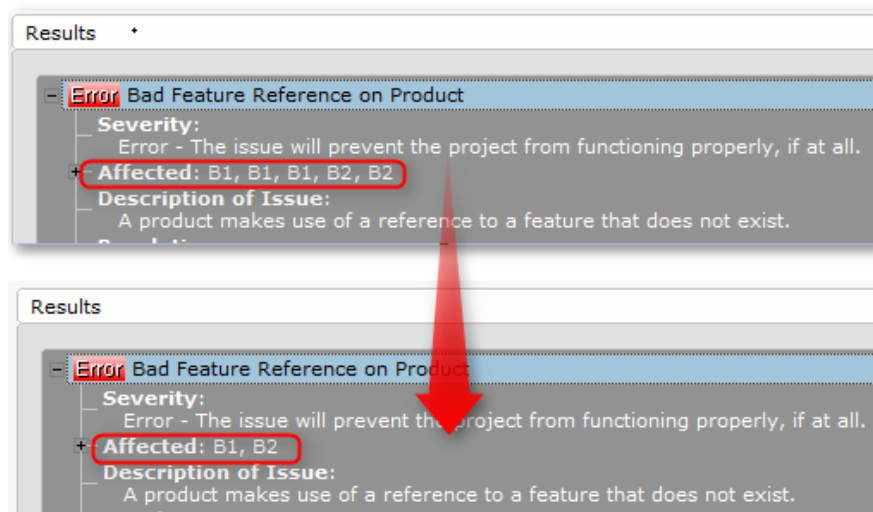
Fixed drop down in quick properties dialog

- Selecting options/materials in the quick properties box will not close too soon/disappear.
- Simply hover to the selection and it will prompt the full list.



Fixed feature reference validation

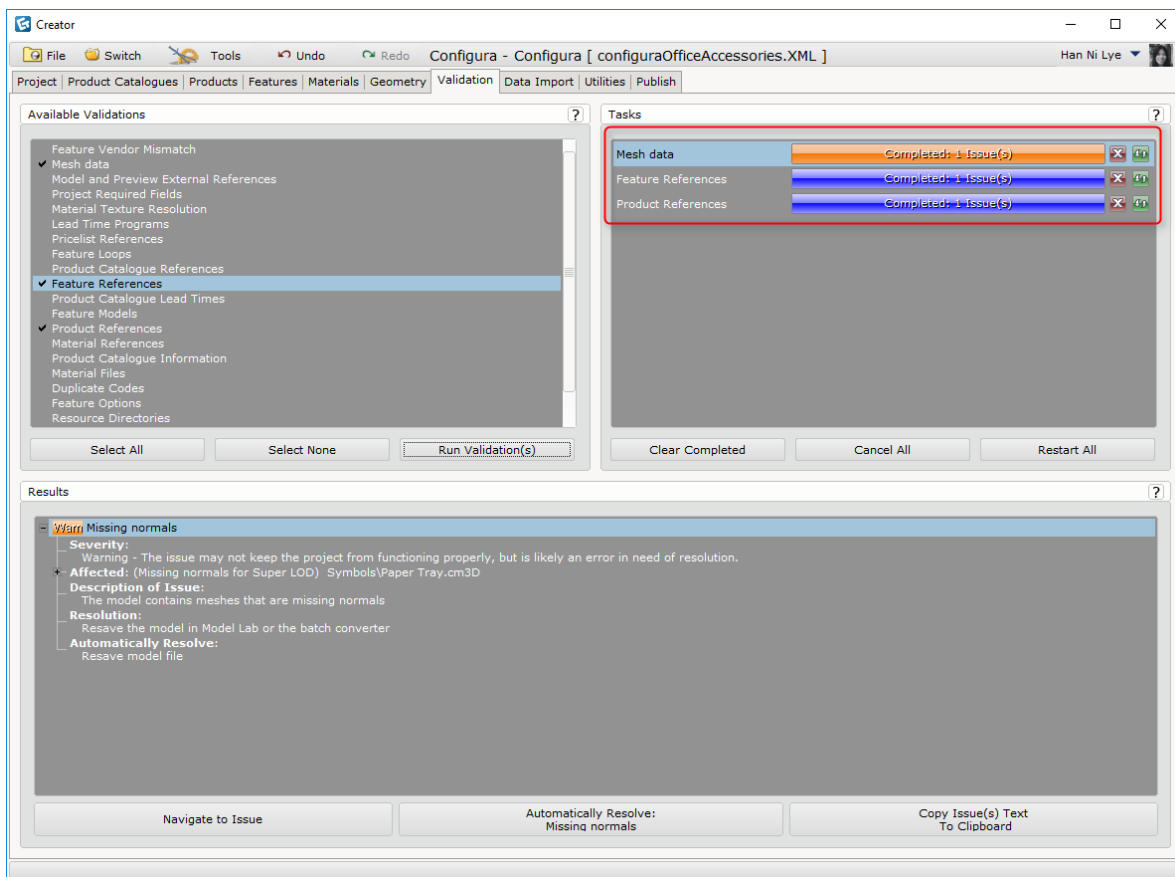
- Bad referenced features will only show once in the affected list.



One step removed from Automatically Resolve button

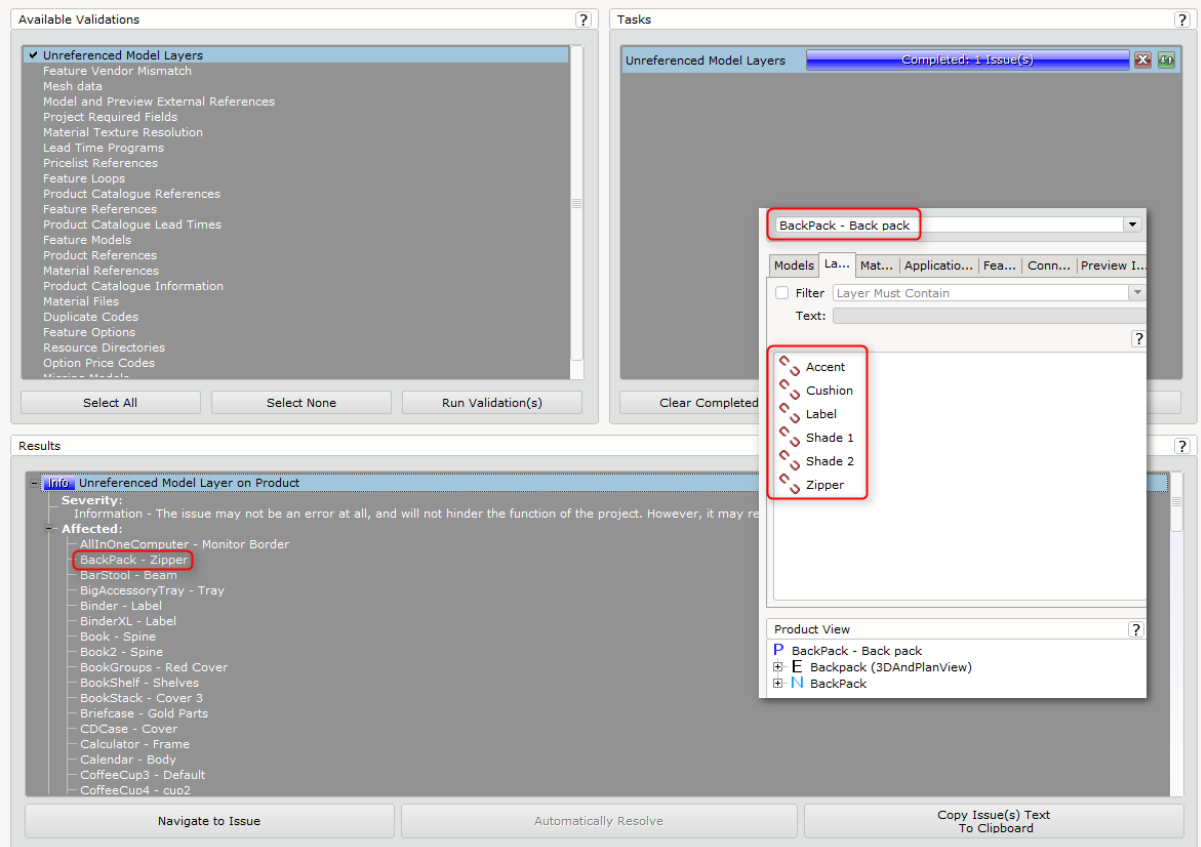
- Click on any of the following violated validations
 - Missing normal in **mesh data**
 - Unreferenced feature in **Feature References**
 - Unreferenced product in **Product References**

will automatically enable access to the **Automatically Resolve** button. Clicking on that button will automatically resolve the selected violation.



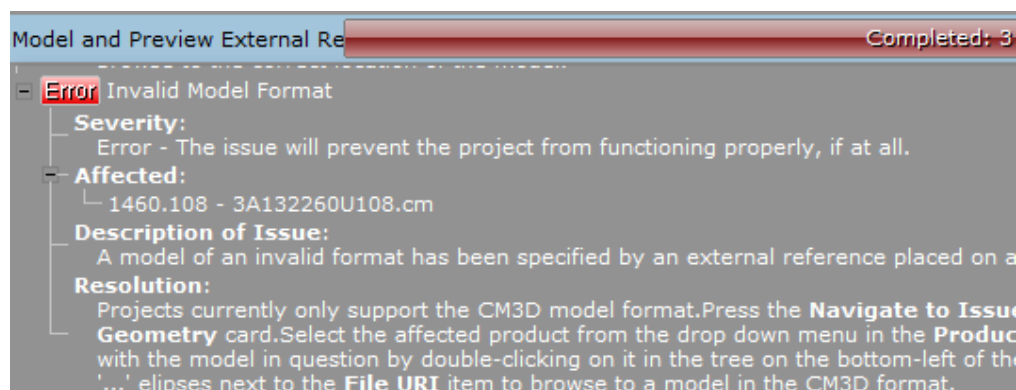
Fixed unreferenced model layer validation

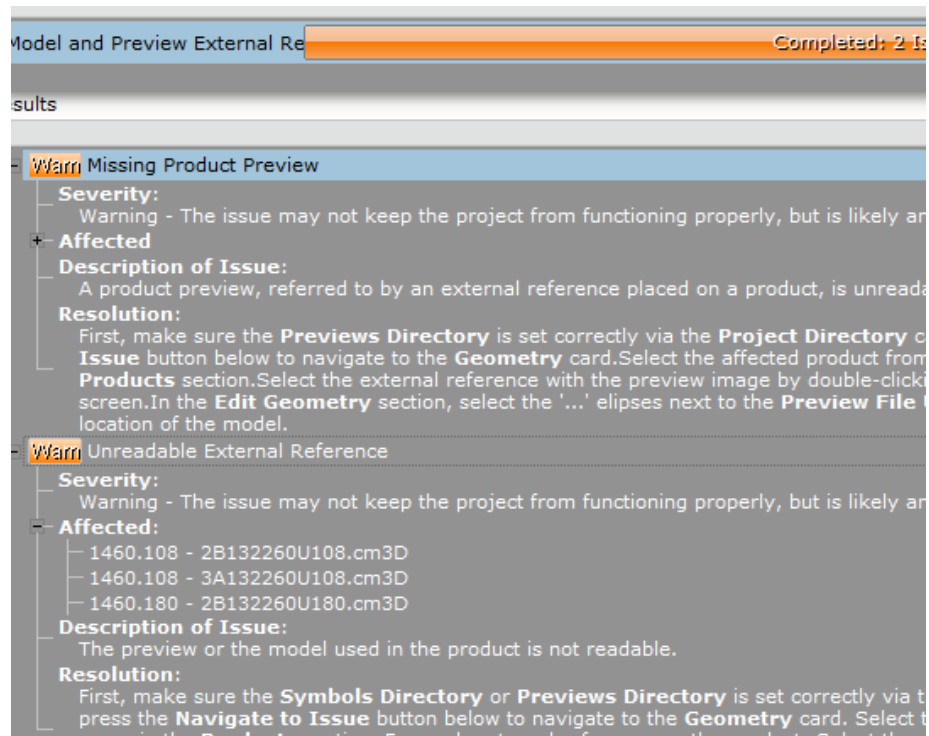
- This validation will exclude the connector layer and layers used in the application area.
- Only one of the layers will be reported in the affected list per product in this version.



Fixed model and preview external references validation

- This validation will check for unassigned product previews, and checks for unreadable external references (product previews and models).
- Also check for invalid model format if its not .cm3d.





Ctrl-S before any saved file will perform save as

- If you have a file that is not saved yet, performing <Ctrl-S> will prompt the **Save As** dialog.

Developer Bug fixing

Only snapAlign to alive snappers

Feature recursion protect

Faster loading time for catalogue explorer

Updated DsPicklistProxy so customization can have their own DsPDsPicklistItemManager

RootProductParent returns null if no value