

# CET Designer for Sales

Brooke Snow  
*Configura*



# AGENDA

- 1 Power in CET
- 2 Live Design
- 3 Sales Tools
- 4 CRM Connect Tool
- 5 Sales Viewer



**POWER** in the **TOOL**

---

Not just for the pretty pictures

Take advantage of the full **ALL**  
**IN ONE** tool

The background of the slide is a teal-colored MSI Stealth laptop, shown from a low angle. The laptop is open, and the screen area is the primary focus. The MSI logo is visible on the top left of the screen, and the word "STEALTH" is printed on the bottom bezel. The text is overlaid on this background.

# LIVE Design

#1 investment your company should make is in Laptops!

More details: Jason Lund's & Donald Stratton

Spec requirements on website

Talk to our support staff for help!

Take your laptop out to the client

Work *TOGETHER* with your client

Overall better dynamic of the design

Make it **FUN**

Lorna – “Close the deal with live design”

Take advantage of the **ALL** the tools...



# SCHEMES



# Schemes

Light, dark, pop of color?

Have it pre-set

This turns over business quickly!

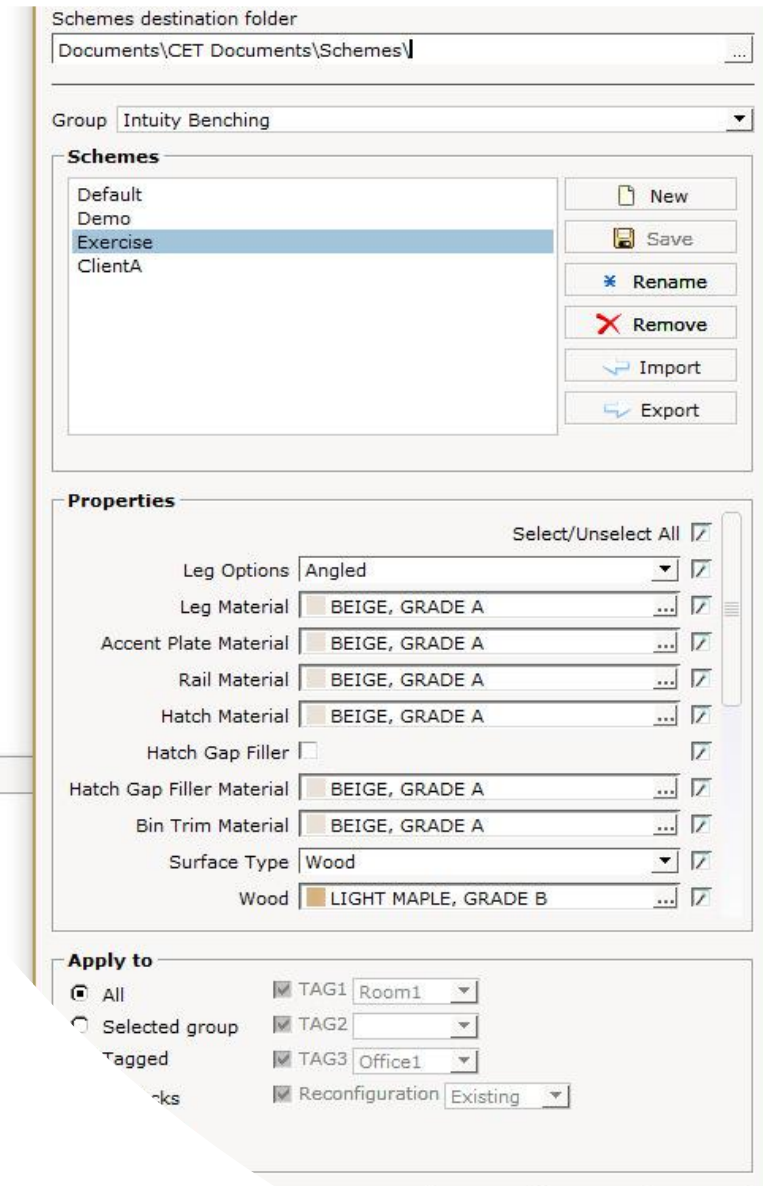
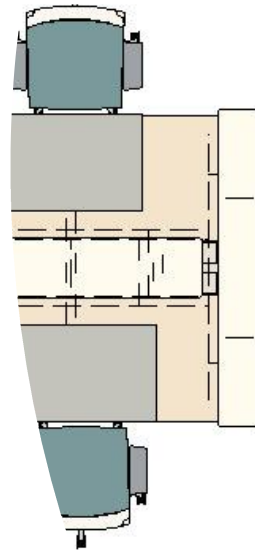
Toggle through the options with your client

Think what would bring emotion to your client

Reusable file

Set up a client folder and save these there

Manufacturers schemes might look different, but function the same



# FAVORITES



# Favorites

Pre-load “idea starters”

Reusable file

Save to that client folder

Client Standards – Typical A, Typical B  
or Typical C... with mirroring –TADA!

Literally anything & everything in the  
drawing can be a fav:

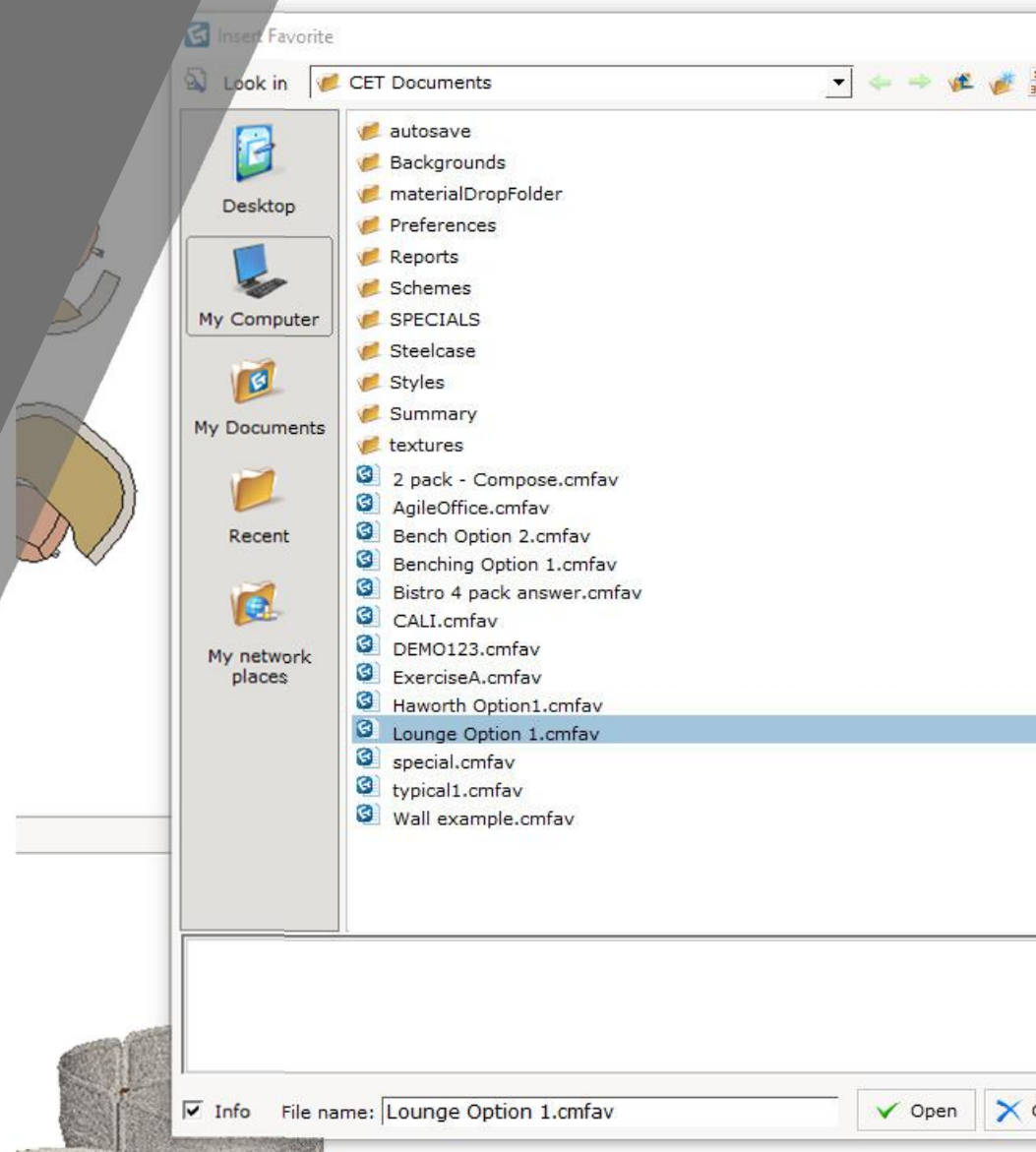
Specials

Edit Graphics

Custom Shapes

Picklist

Sketchup Symbols... not always  
connected to the internet, no  
problem





# ALTERNATIVES





**Alternatives** [X]

Alternative name:

Description:

- Alternative 1
- Alternative 2

Keep camera position

# Alternatives

Can quickly give options to client

ALL saved in one drawing

Dialog box will pop up when load drawing

See different price points per alternative

Can take notes from the client

Can be used in many ways...

Separate multiple floors on different alternatives  
- work around from multi-floors

Phases - can show same floorplan just phased out

Reconfigurations

# Utilizing Calculations



# Utilizing Calculations

Set up templates for your dealership...

“Demo template” for live design

Can turn off summary in Calculation View

Can turn on/off pricing in the corner

Part Tagging – filter out areas

Apply your Discounts

Right click locate on drawing

Lasso Calculator

#	+	i	Part Number	Quantity	Description
<b>Haworth</b>					
<b>HAS</b>					
1		i	SPG-22-5	2	Poppy Guest Chair, Fabric seat, Fabric Back, 5 Star Base, Hard Caster
<b>HPA</b>					
2		i	TARN-3636-WMS	2	Planes,Table,Rd,Wd,36"x36",Caswd,Co:None,Xbase,Cstr,29"H,Ptd
<b>WOP</b>					
3		i	HOA-3-ENRM	2	Shared Workspaces, Openest, Application, Double Booth, Fabric Seat, No Table
4		i	HOAP-3-NWNLS	2	Shared Workspaces, Openest, Application and Worksurface, Privacy Desk, Veneer
<b>Summary</b>					
					Settings
					\$60,236.50
Discount					0 % \$0.00
					\$0.00
Packing					\$0.00
Assembly					\$0.00
Environmental fees					\$0.00
Round up/down					(\$6.50)
CITY TAX					\$60,230.00





# Stay In 3D



# Stay in 3D

---

Make it **FUN**

Bring out the emotion in the client. This is what they want to see!

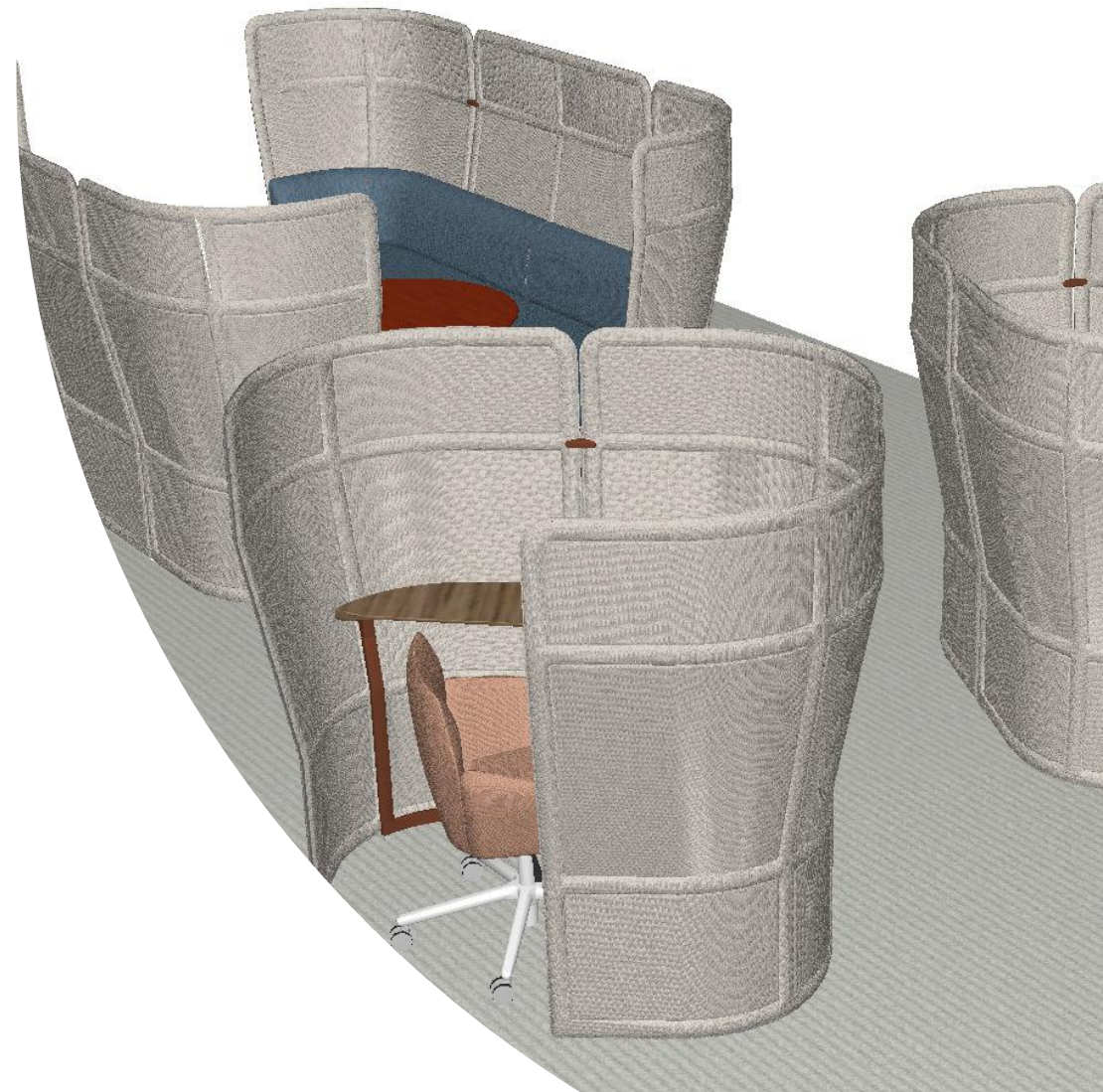
Quick... *but not too quick*

Utilize the freeze command

DEMO view mode

Customize & get rid of everything

Pop out a 3D view



# Pretty Pictures



# Pretty Pictures

## Renderings

Set up multiple angles ahead of time

Utilize simple

Advance? Save settings as preset

Quick rendering in 3D View

## 360's

[Yulio](#) – 30 day free trial

Virtual Reality – Oculus Rift & HTC Vive

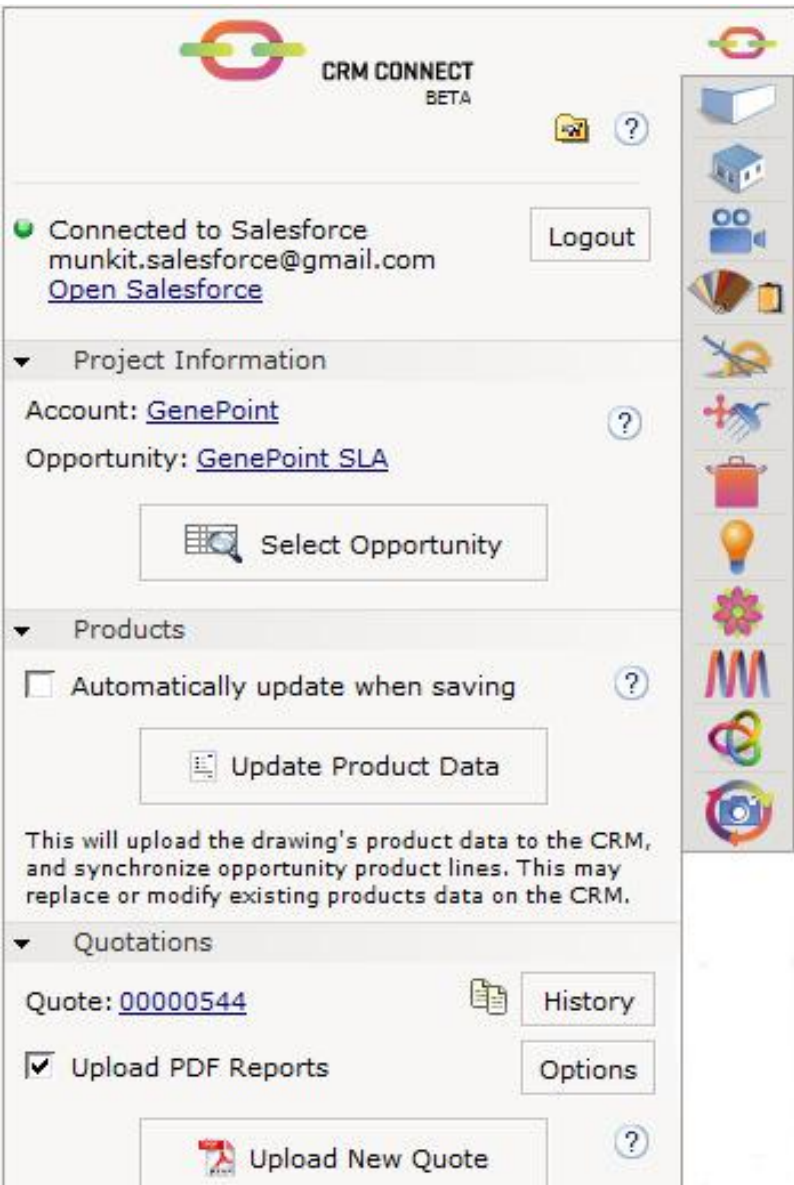
AR?! Cooool stuff!





# CRM Connect Tool





# CRM Connect Tool

---

**CRM** = Customer Relationship Management

We support Salesforce & Zoho

Features:

- Load latest project information from the CRM system
- Populate product databases in the CRM system
- Synchronize opportunities with product line items
- Automatically generating quotation numbers
- Upload reports generated in CET Designer to the CRM system

Getting Started:

<https://www.configura.com/cet/support/getting-started-with-crm-connect/>

# Sales Viewer



# Sales Viewer

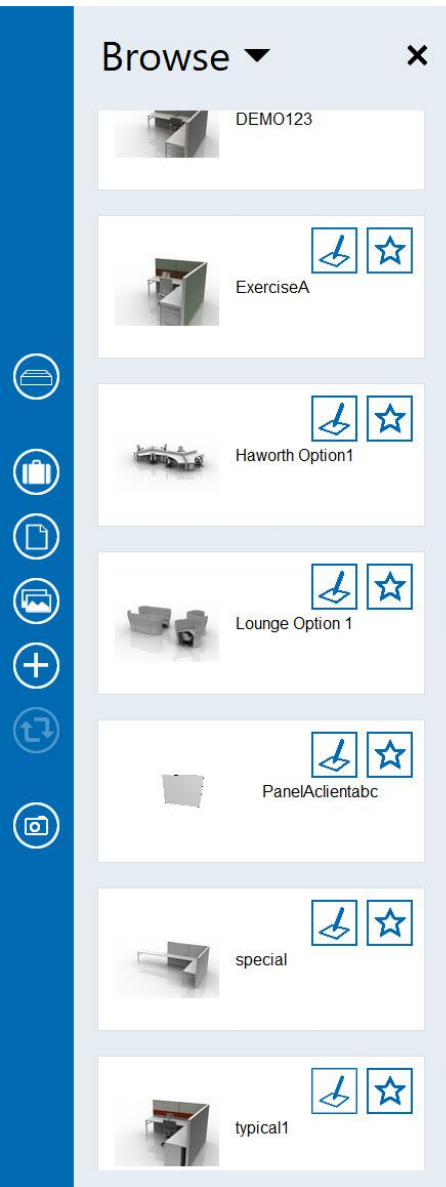
---

## What is Sales Viewer?

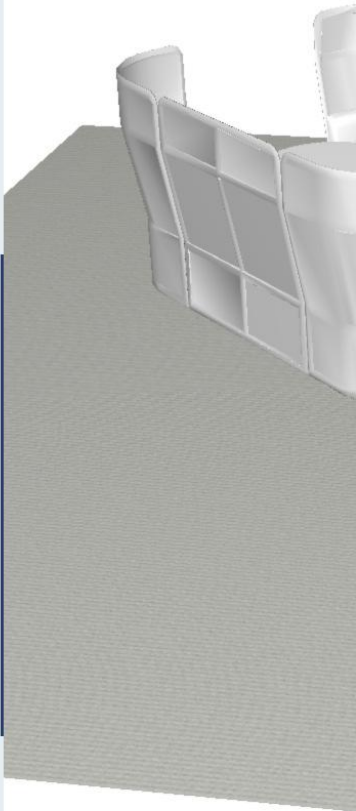
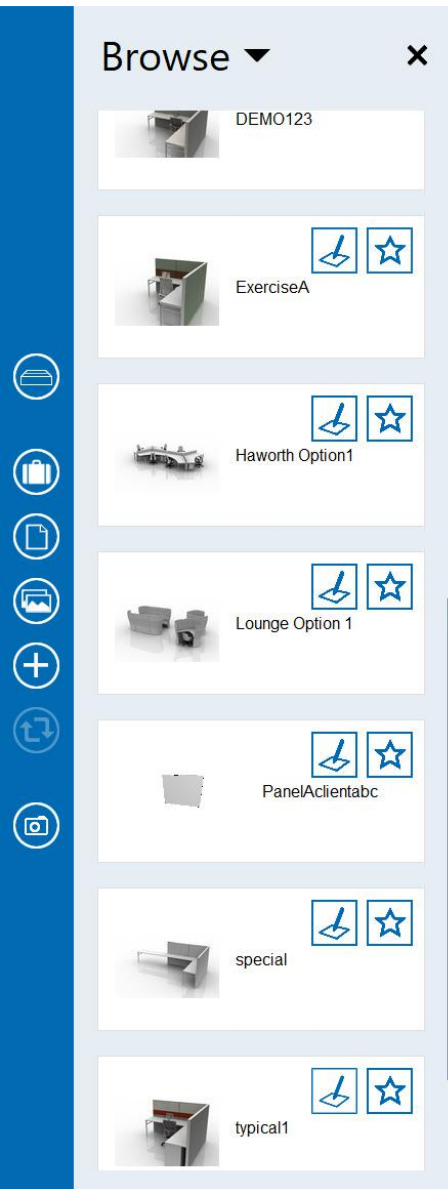
Intended for use on the go, Sales Viewer is a demo and sales tool for designers and salespeople that enables you to create drawings using favorites, either on site with a customer or as a preparation step before a customer meeting

Focus lies on quickly presenting products in an appealing and interactive way, which is achieved through easy design, attractive photos and instant price calculation

Sales Viewer has been developed mainly for touchscreens and has been successfully tested on Surface Pro







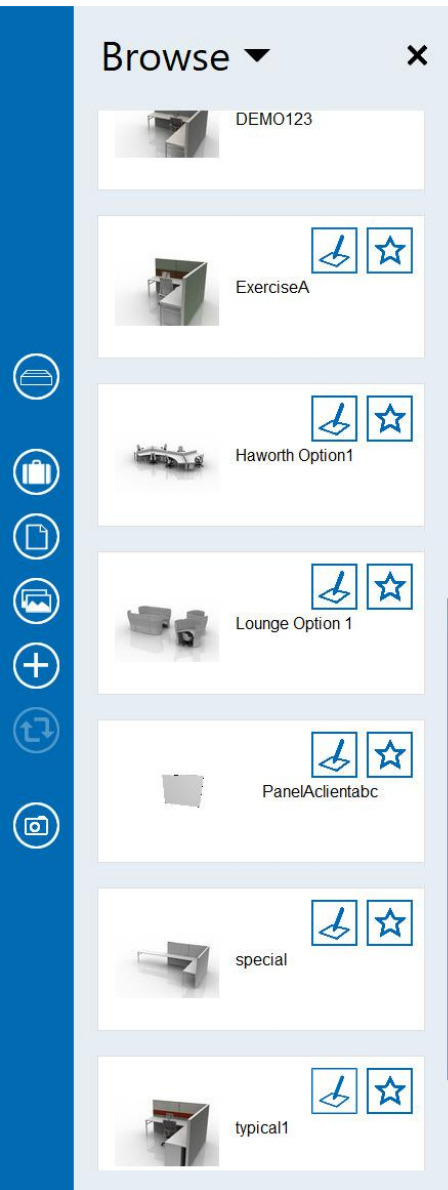
# Sales Viewer

---

## How does it work?

An administrator sets up a *Collection* of favorites in **CET Designer**, publishes the Collection on **MyConfigura**, and gives users access rights to the Collection. The administrator creates, edits and publishes Collections; a role that anyone with a Sales Viewer license can have. Collections cannot be edited or altered from within Sales Viewer.

In **Sales Viewer**, users can access their Collections and use the favorites in different customer projects – *Cases*. Each favorite can easily be bookmarked or commented; a great tool for remembering or taking notes on what the customer likes



# Sales Viewer

---

## What's Next?

A simplified BOM where you can see some prices and quantity of your drawing

Possibility to create a pdf of the BOM

Ability to save a rendering of a drawing

Filter on starred objects

Single install of Sales Viewer (so you cannot see CET if you only have Sales Viewer license)

Material on floor changed to white

Ability to change the name of a drawing

Ability to e-mail drawing

A warm-toned, sepia-style photograph of a desk. In the center is an open laptop with a dark screen. To the left of the laptop is a pen resting on a notepad. In the bottom right foreground, there is a white coffee cup on a saucer. The background is a wooden desk surface. The text "Q&A" is overlaid in the center of the image in a white, bold, sans-serif font.

**Q&A**